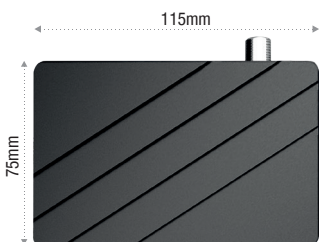


Congratulations on purchasing an EDISION proton T265

Please note that this information is valid at the time of publication.

Current information and detailed user manuals can be found on the Internet at: www.edision.gr

1 Unpacking



Remote control with 2 AAA batteries



Documentation



Service note

Please contact your EDISION specialist dealer for any further support and service.

Receiver proton T265

Notes: The front is factory fitted with a protective foil which can be removed easily and with caution. (Protective foil only for devices with display)

The scope of delivery may also include parts not listed here

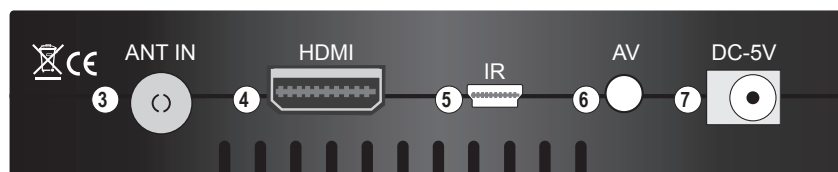
Front Panel

- ① USB: Connection for USB storage devices
- ② Infrared sensor for the reception of remote control commands.



Back Panel

- ③ ANT IN: Input for connecting the signal from the antenna
- ④ HDMI: Connection to an HDTV quality TV
- ⑤ IR IN: Infrared connection port
- ⑥ AV OUT: For broadcasting video and sound signals
- ⑦ Connection for an adapter (DC 5V / 1,0A)

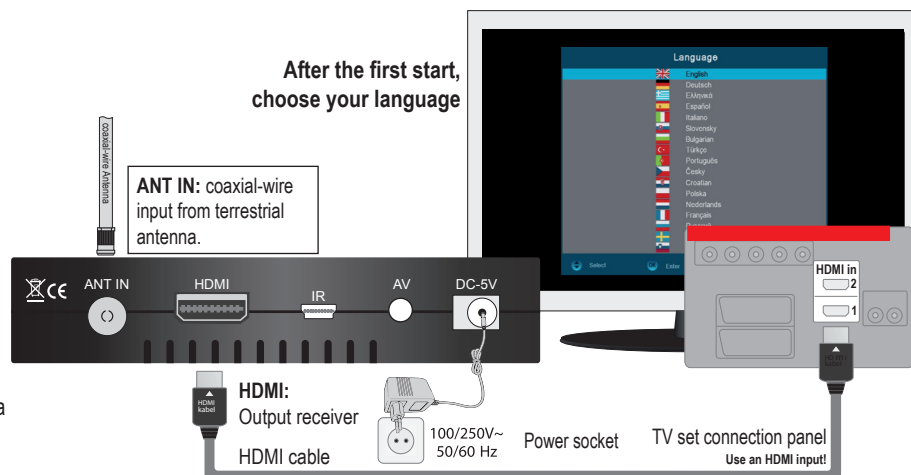


2 Connecting and switching on

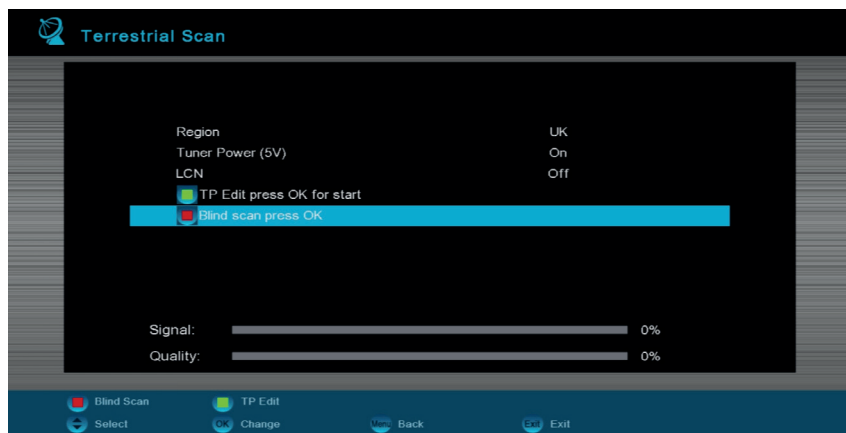
Note: For trouble-free signal reception your antenna and cable installation should be calibrated and inspected by a qualified professional with a digital TV-level-measuring instrument.

- Connect the receiver's **HDMI-output** to the HDMI-input of your television set (TV).
- Then connect the coaxial cable from the terrestrial antenna to the **ANT IN** input of the receiver.
- Insert the batteries into the remote.
Further information you will find at the back of this instruction manual.
- Connect the receiver to the mains power supply network, by means of its power supply unit included in the package.
- The receiver starts with the BOOT-process and will be ready for you to enjoy in a few minutes.

After the first start, choose your language

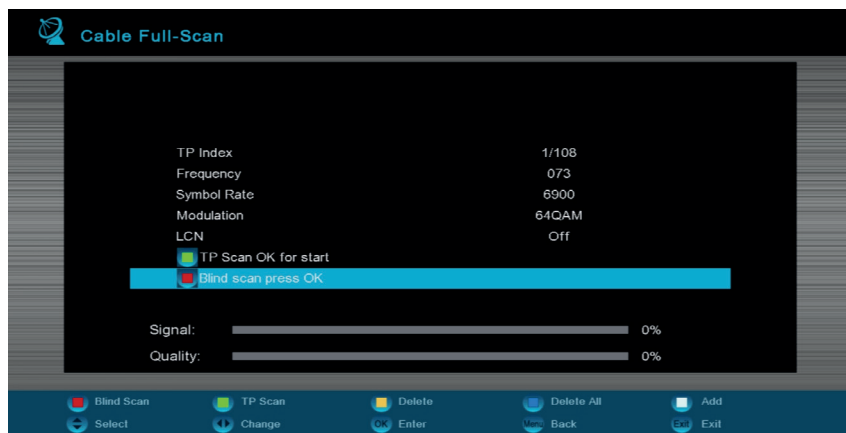


3 Installation



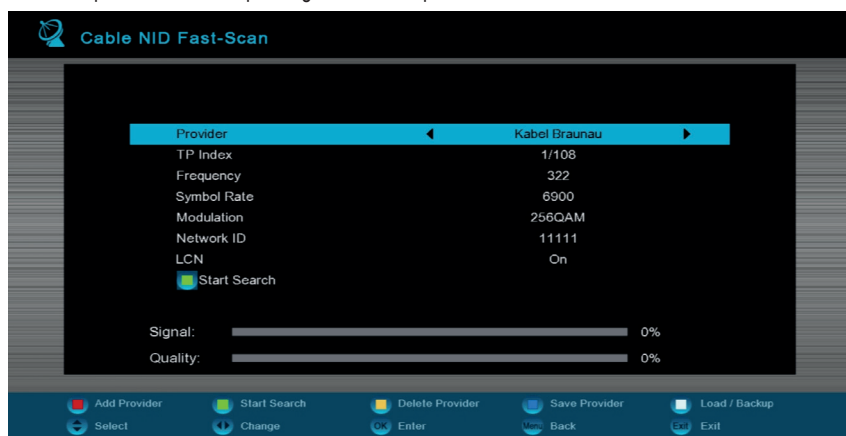
Terrestrial Scan

After you have connected the antenna cable to the receiver and have sufficient signal level, select the «Blind scan press OK» button and press the «OK» button or the red button on your remote control to search for digital terrestrial (DVB-T / T2) channels. If you want a manual search, select «TP Edit press OK for start» with «OK» and then press the «OK» button or the green button on your remote control to confirm. Select the «CH. No.» (TP) channel and then «Start Search» with the «OK» or the green button.



Cable Full-Scan

After you have connected the antenna cable to the receiver and have sufficient signal level, select the «Blind scan press OK» and press «OK» or the red button on your remote control to search for all available digital cable programs (DVB- C) Info: This process can take up to 20 minutes depending on the cable provider!



Cable NID Fast-Scan (Cable Provider NID Scan)

After you have connected the antenna cable to the receiver and have sufficient signal level, select the «Provider» and «Provider name» (for example, KD Muenchen) from the list. Then go to «Start search» and press «OK» or the green button on your remote control, then the programs of your cable provider should appear in a few seconds. If your provider is not in the list, please contact your cable provider directly and ask for your 5-digit network ID (e.g., NID 11111). Then enter your NID and press «Start Search» or the green key.

4 Remote Control Unit

Note: Many of the listed keys have multiple functions which are shown upon menu display. Some keys and functions refer to optional features.

Important features and keys are explained in the functions below. The respective keys are in red on the graphs.



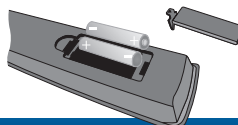
- POWER** (Red button) On/Off button.
- MUTE** (Mute icon) Mute On/Off.
- V.FORMAT** (TV icon) Changes the screen TV standard.
- SAT** (Satellite icon) Safe USB Removal
- FAV** (Favourite icon) Displays the satellite lists.
- FIND** (Magnifying glass icon) Displays the favourite lists.
- MENU** (Menu icon) To search for programs in lists.
- INFO** (Info icon) Displays a file list.
- OK** (Center button) Scrolls up (+) or down (-) in lists of channel lists.
- CH+** (Up arrow) Displays the main menu.
- CH-** (Down arrow) Displays the information bar.
- VOL+** (Right arrow) Use the arrow buttons to scroll up in lists. Below, scroll left or right or change the volume. Confirm the menu inputs with the OK button or call up the channel list.
- VOL-** (Left arrow)
- EXIT** (Exit icon) Exits a Menu/Dialogue window
- EDV** (Electronic Program Guide icon) Selection of the electronic program guide EDIVISION.
- 1...0** (Numeric keypad) Selection of TV/Radio program. Input of numbers or letters in the menus.
- RECALL** (Recall icon) Returns to the previous program.
- TV/RADIO** (TV/Radio icon) Toggles between TV and Radio mode.
- Fast Backward** (Double left arrow) Allows fast backward.
- Fast Forward** (Double right arrow) Allows fast forward.
- Previous** (Single left arrow) Skips to the beginning or previous Recording/Image.
- Next** (Single right arrow) Skips to the beginning or previous Recording/Image.
- REC** (Record icon) Starts recording manually.
- Play/Pause** (Play/Pause icon) Starts Playback/Pauses playback.
- Stop** (Stop icon) Finishes TimeShift, a recording or a playback.
- Standby** (Power icon) Allows you to set the time at which the Receiver autom. switches to standby mode.
- AUDIO** (Audio icon) Calls up the Audio menu.
- OPTION** (Green button) Option button.
- TXT** (Yellow button) Calls up the Subtitle/Teletext menu.
- WebTV** (Blue button) Web TV button (not supported).



Inserting batteries into the remote control

Pay attention to the correct polarity while inserting the batteries (2XAAA).

If the remote is not to be used for extended period of time please remove the batteries to avoid potential damage to the remote. Dispose of the batteries properly according to recycle procedures.



For further information, please visit our website:

www.edision.gr