

Congratulations on purchasing an EDISION proton S2 plus

Please note that this information is valid at the time of publication.

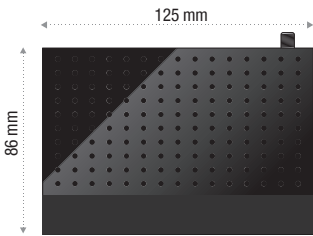
Current information and detailed user manuals can be found on the Internet at: www.edision.gr

1 Unpacking

Package Contents

Documentation

Service note



Please contact your EDISION specialist dealer for any further support and service.

Receiver proton S2 plus

Notes: The front is factory fitted with a protective foil which can be removed easily and with caution. (Protective foil only for devices with display)

The scope of delivery may also include parts not listed here

Front Panel

- ① USB: Connection for USB storage devices
- ② Display LED, displays current information
- ③ Infrared sensor for the reception of remote control commands
- ④ CH- / CH+ buttons: for moving in the program lists
- ⑤ POWER button: Activates/Deactivates the device



Back Panel

- ⑥ LNB IN: Connection for the coaxial cable to the signal from the satellite system
- ⑦ ETHERNET: Ethernet port RJ45 10/100 Mbps
- ⑧ HDMI: Connection to an HDTV quality TV
- ⑨ SCART: For connecting to a TV set, using SCART cable [not for HD TV]
- ⑩ Connection for an adapter (DC 12V)



Subpages

- ⑪ IR IN: Infrared connection port
- ⑫ S/PDIF: Audio interface for amplifier/audio console

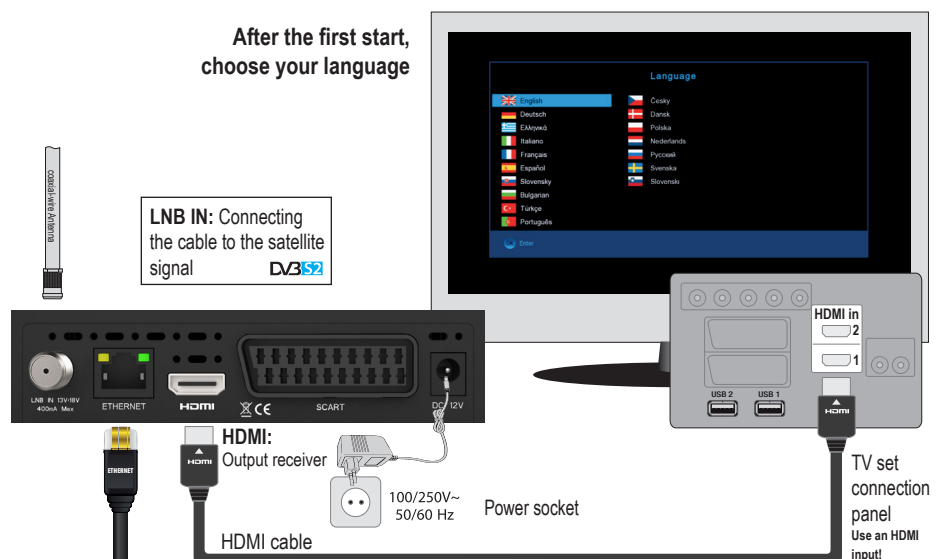


2 Connecting and switching on

Note: For interference-free satellite TV reception, a specialist technician must calibrate your satellite TV system with a digital TV level meter.

- Connect the receiver using **HDMI cable** via the HDMI output port to your TV's HDMI input port.
- Now connect the receiver to the satellite antenna cable via the **LNB IN** input.
- Insert the batteries into the remote control. Notes on the remote control can be found on the back of these instructions.
- Connect the receiver to the power supply.
- The receiver starts with the BOOT process and is operational within a short time.

After the first start, choose your language



For information about **EDISION Hardware or Software** matters, please contact support@edision.gr or visit the **DOWNLOAD CENTER:** <https://www.edision.gr/en/support>



"The terms HDMI, HDMI High-Definition Multimedia Interface, and the HDMI Logo are trademarks or registered trademarks of HDMI Licensing Administrator, Inc."

3 Remote Control UNIVERSAL REMOTE CONTROL 2in1



The EDI-RCU 4 learn is compatible with all EDISION STB's*, plus it is pre-programmed with 4 basic functions for SAMSUNG & LG** tv sets. Alternatively, you can program its 4 programmable buttons to any 4 functions of your TV.

- POWER**
 Power
Switches between operation and standby
- MUTE**
 Mute
Mutes or unmutes the audio temporarily
- VOL**
 VOL+ / VOL-
Scrolls up (+) or down (-) change the volume
- PAGE**
 PAGE+ / PAGE-
Scrolls the channel-list forward or backward
- V.FORMAT**
 V. FORMAT
Changes the display TV standard
- SAT**
 FIND
To search e.g. channels & show SAT list
- MENU**
 Menu
Open main menu & select sub menu using by navigation button
- INFO**
 INFO
Displays the information bar
- EXIT**
 EXIT
Stops a menu/pop-up window
- EPG**
 EPG
Selection of the electronic program support EDISION
- RECALL**
 RECALL
Returns to previous channel
- TV/RADIO**
 TV/RADIO
Switch to TV mode. Switch to Radio mode



NUMERIC KEY (0-9)
Control the numerical operation and change the Channel/Service number directly

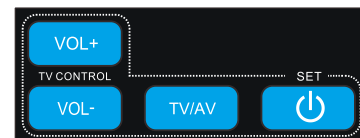
- Displays a file-list
- Safe USB Removal
- REC**
Activates immediately recording-option
- Fast Possibility backward
- Fast-forward capability
- PLAY/PAUSE**
Play start/pause
- Stops timeshift, recording or playing
- Allows you to set the time at which the Receiver autom. switches to standby mode
- Activates the audio-menu
- Option button. Switching between TV/AV mode (Not in HDMI mode)
- Activates the menu "Subtitle/teletext"
- Displays favorite lists (if any)

MANUAL INSTRUCTION FOR EDI-RCU 4 Learn

Your set-top-box remote control has 4 learning-function keys, in the up right hand side TV keypad panel area. Each one can be used accordingly as the following example:

1. Turning your TV set ON/OFF **[SET]**
2. Increasing/decreasing volume **[VOL+ , VOL-]**
3. Switching between TV/AV mode **[TV/AV]**

The other 39 keys are for the control of the EDISION set-top-box.



SET UP FOR LEARNING FUNCTION

- Press **[SET]** key in the up right hand side TV keypad panel area continuously for 5 Sec. until the LED lights up and keep lighting, then release the key. This means the remote control is in the learning mode.
- Within 10 seconds, press the key in the original TV IR control, which needs to be learned, for example the **[POWER]** key, then the red LED is flashing. It means this button is ready to receive the learning signal.
- Aim the emission port of the original TV remote control at the front at the emission port at the front of your set-top box remote control (distance between these two ports has to be about 2~3 CM).
- Then press the key which is to be learned in your original TV remote control, for example the **[POWER]** key of your original TV remote control continuously for 3 seconds. If the red LED flashes quickly for three times and keep lighting, it means the set-top box remote control has succeeded in receiving the signal and you have completed the learning procedure of ON/OFF **[TV POWER]** key.
- Then release the **[POWER]** key of your original TV remote control.

If the copying procedure fails, the red LED will blink and stay OFF. In this case please repeat the procedure.

For the next programmable function, please repeat steps 1 to 2:

- Switching between TV/AV mode **[TV/AV]**
- Increasing/decreasing volume **[VOL+ , VOL-]**

Now you can operate your TV with the 4 programmed by you keys of your set-top box remote control. During the operation, the LED will flash to indicate that the signal is transmitted!

* For EDISION STB compatibility, please visit our webpage

** LG & SAMSUNG are brand names that belong solely to LG Electronics Inc. and Samsung Electronics Co., Ltd respectively. Any brand name reference in this text is only for informational purposes towards the consumer that is interested in the product.

Visit us on:

www.edision.gr