

# picco T2

Ricevitore digitale terrestre Full HD DVB-T2



## PICCO T2 - Supporto WiFi



01-07-0021 PICCO T2



07-02-0002 WiFi EDI-Mega

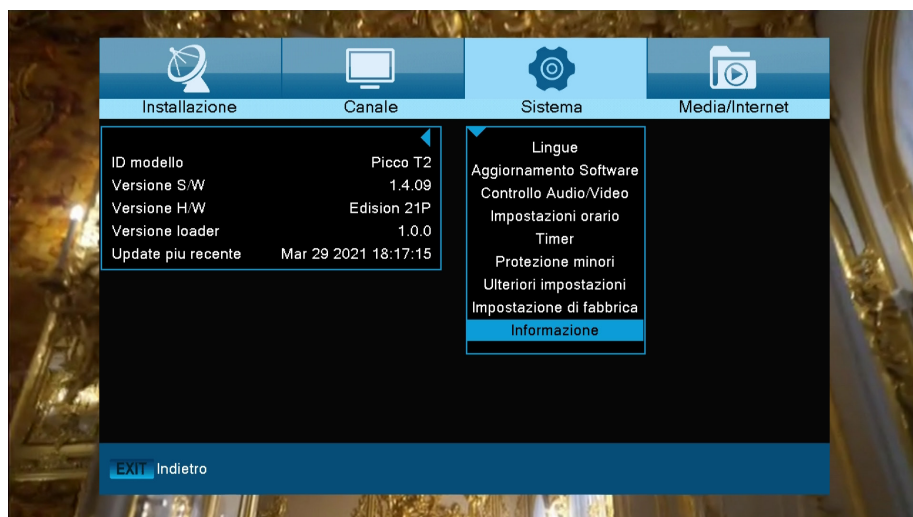
Il ricevitore terrestre PICCO T2 dalla versione software 1.4.09 e successive supporta USB WiFi per le seguenti applicazioni.

\* La connessione si ottiene con un dongle USB-WiFi aggiuntivo (07-02-0002 WiFi EDI-Mega).

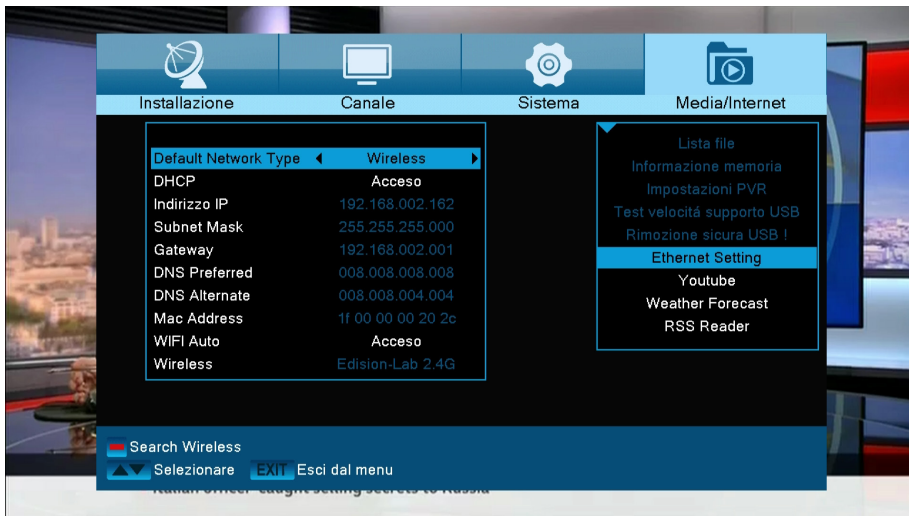
### Vantaggi per il cliente:

- Supporto WiFi USB, per applicazioni Internet \*: YouTube, notizie RSS, Weather Forecast (Meteo)

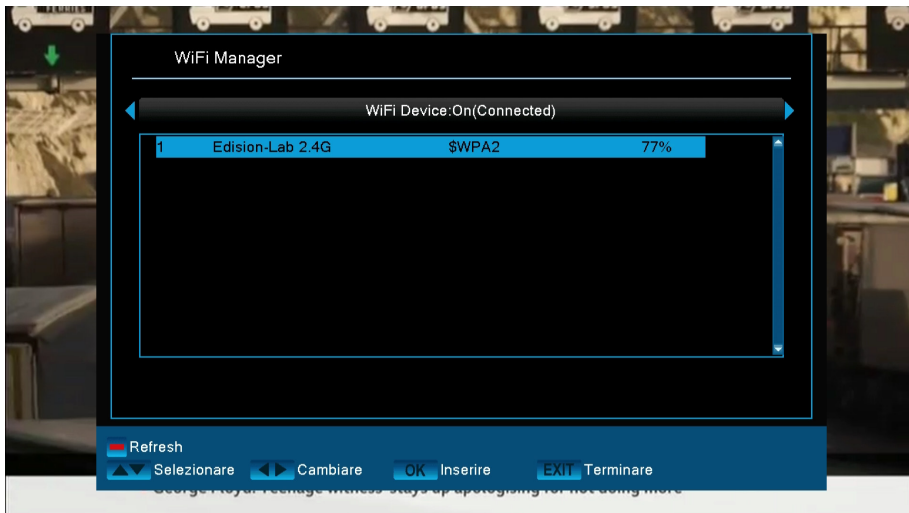
### Passo 1. Menù-> Sistema -> Informazione -> Versione S/W 1.4.09



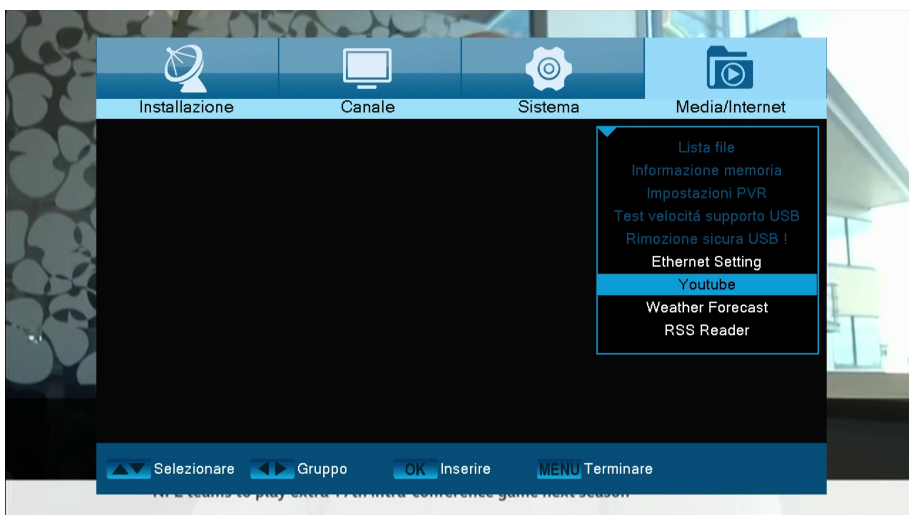
**Passo 2.** Menù -> Media/Internet -> Ethernet Setting -> Default Network Type -> Wireless -> Search Wireless (pulsante rosso)



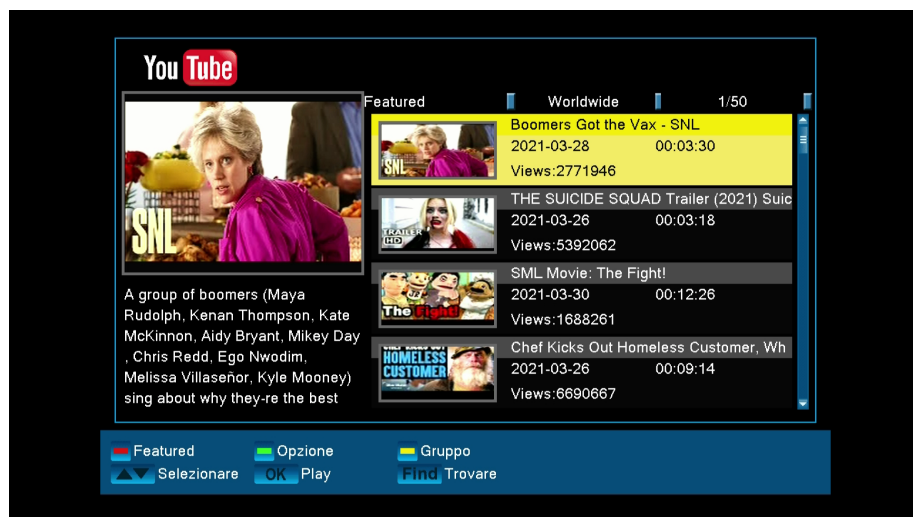
**Passo 3.** Scegliere SSID & Impostare la password WiFi



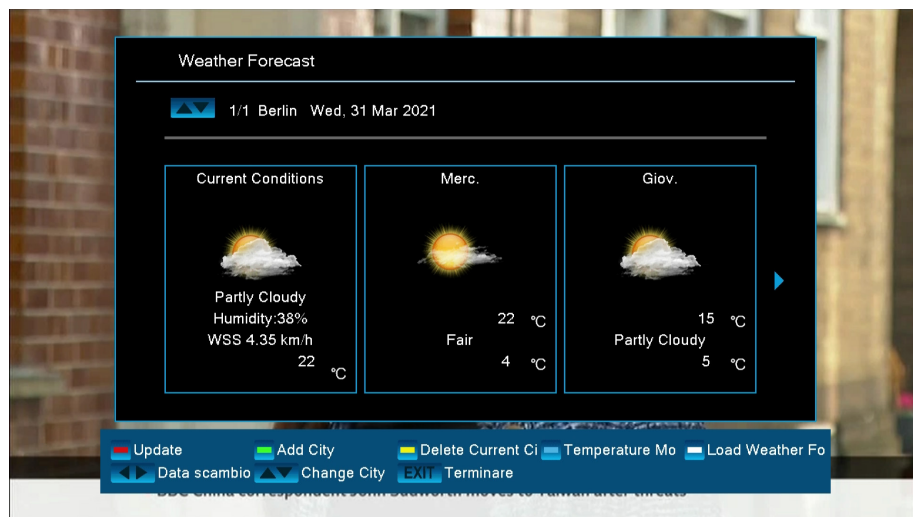
**Passo 4.** Menù -> Media/Internet -> Youtube, Weather Forecast, RSS Reader



## Passo 5. Menù -> Media/Internet -> YouTube



## Passo 6. Menù -> Media/Internet -> Weather Forecast



## Passo 7. Menù -> Media/Internet -> RSS Reader

