

picco T2

Full HD Digital Terrestrial Receiver DVB-T2



PICCO T2 - WiFi Support



01-07-0021 PICCO T2



07-02-0002 WiFi EDI-Mega

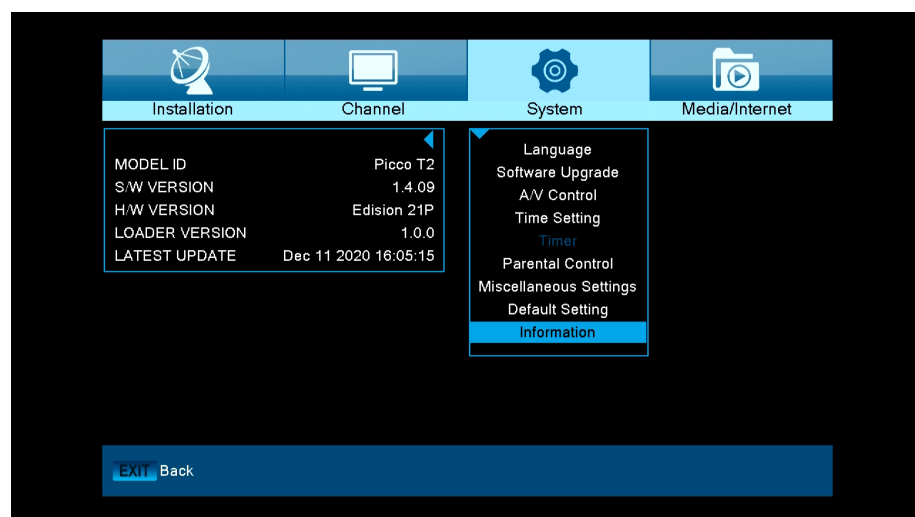
PICCO T2 Terrestrial Receiver from software version 1.4.09 and above supports USB WiFi for the following applications.

* The connection is achieved with an additional USB-WiFi dongle (07-02-0002 WiFi EDI-Mega).

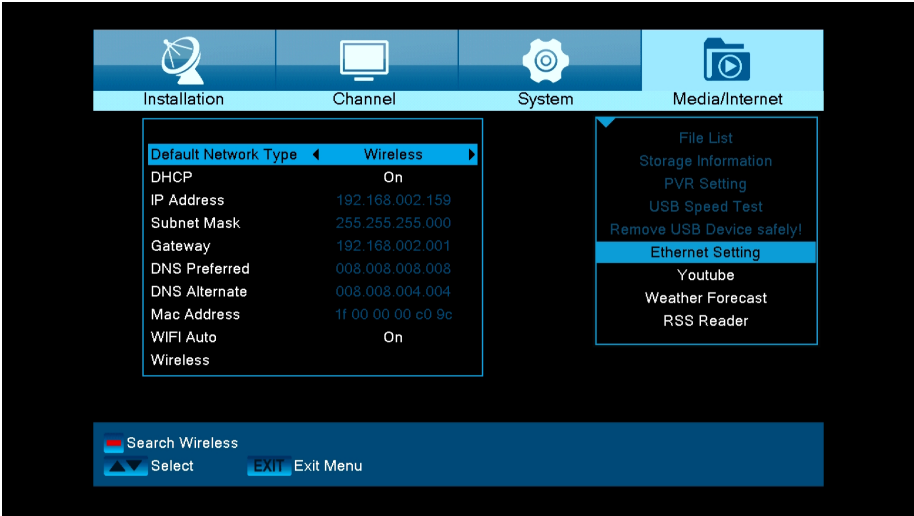
Customer advantages:

- USB WiFi support, for Internet Applications *: YouTube, RSS News, Weather Forecast

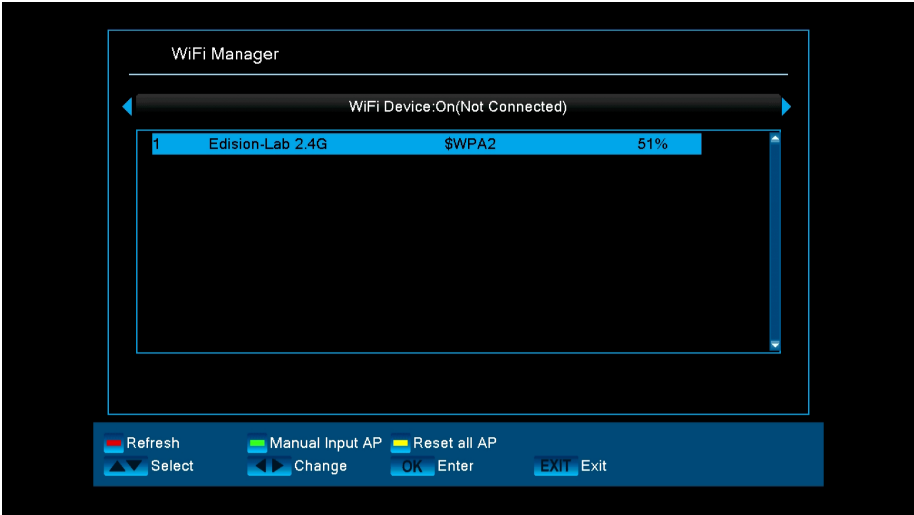
Step 1. Menu -> System -> Information -> S/W Version 1.4.09



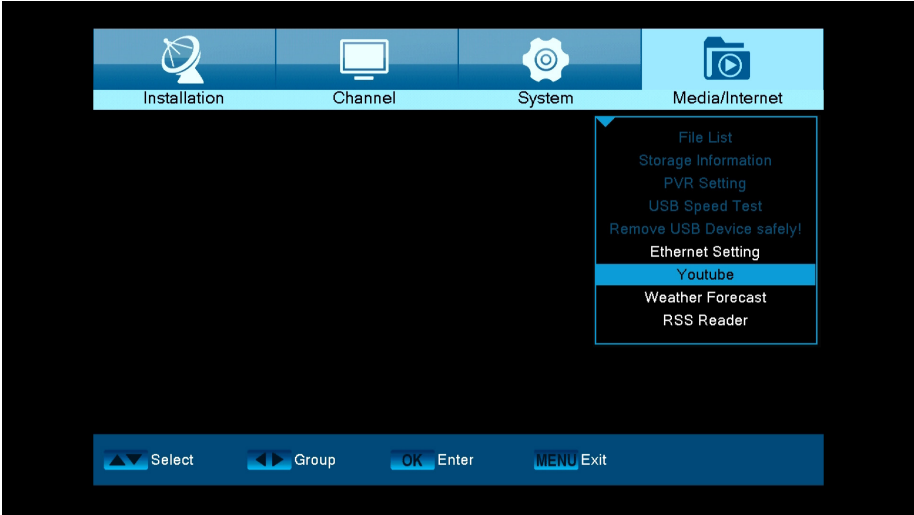
Step 2. Menu -> Media / Internet -> Ethernet Setting -> Default Network Type -> Wireless -> Search Wireless (red button)



Step 3. Select SSID & Set WiFi password



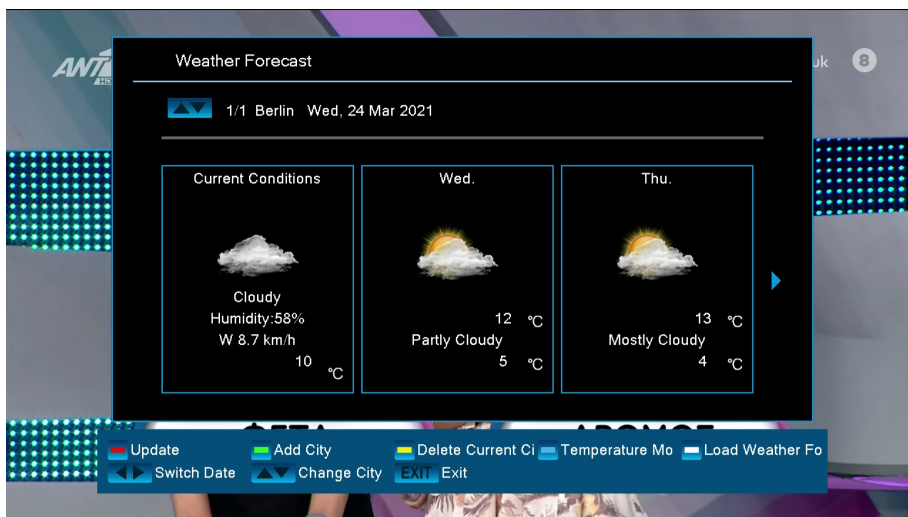
Step 4. Menu -> Media/Internet -> Youtube, Weather Forecast, RSS reader



Step 5. Menu -> Media/Internet -> Youtube



Step 6. Menu -> Media/Internet -> Weather Forecast



Step 7. Menu -> Media/Internet -> RSS Reader

