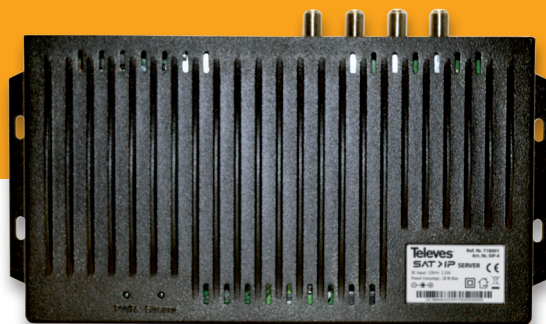


Televes®



Refs. 718001, 718010

Art. Nr. SIP-4, SIP-REC1

EN SAT over IP

User manual

Index

1. Sicherheitshinweise	4
2. Technical data	5
2.1. Ref. 718001 (Art. Nr. SIP-4)	5
2.2. Ref. 718010 (Art. Nr. SIP-REC1)	5
3. Product description	6
3.1. SIP-4	6
3.2. SIP-REC1	7
4. Connecting the product	8
5. Web User Interface (WebUI)	9
6. TV on a PC	12
7. TV on iPad / Tablet	13

1. Safety Instructions

- All the safety and operating instructions should be read before the product is operated.
- The safety and operating instructions should be retained for future reference.
- All operating and use instructions should be followed.
- Unplug this products from the wall outlet before cleaning. Do not use liquid cleaners or aerosol cleaners. Use o damp cloth for the cleaning.
- The power adaptor is the switch off device of the equipment. The wall power socket should be located near the equipment and easily accessible.
- Do not use attachments not recommended by the products manufacturer if they may cause hazards.
- To prevent fire or shock hazard, do not expose the unit to rain or moisture.
- Do not use this product near water -for example, near a bath tub, wash bowl, kitchen sink, or laundry tub, in a wet basement, or near a swimming pool; and the like.
- Any mounting of the product should follow the manufacturer's instructions, and should use a mounting accessory recommended by the manufacturer.
- This product should be operated only from the type of power source indicated on the marking label. If you are not sure of the type or power supply to your home, consult your product dealer or local Power Company.
- Power supply cord should be routed so that they are not likely to be walked on or pinched.
- For added protection for this product during a lightning storm, or it is left unattended and unused for long periods of time, unplug it from the wall outlet and disconnect cable system. This will prevent damage to the product due to lightning and powerline surges.
- Never push objects of any kind into this product through openings as they may touch dangerous voltage points or short-out parts that could result in a fire or electronic shock.
- Do not overload wall outlets, extension cords, or integral convenience receptacles as this can result in a risk of fire or electric shock.
- Unplug this product from the wall outlet and refer servicing to qualified service personnel under the following conditions:
 - When the power- supply cord or plug is damaged.
 - If liquid have been spilled, or objects have fallen into the products.
 - If the product does not operate normally by following the operating instructions, adjust only those controls that are covered by the operating instructions as an improper adjusment of other control may result in damage and will often require extensive work by a qualified technician to restore this product

to its normal operation.

- When the product exhibits a distinct change in performance -this indicates a need for service.
- If the products has been dropped or damaged in any way.
- When replacement parts are required, be sure the service technician has used replacement parts specified by the manufacturer or that have the same characteristics as the original part. Unauthorized substitu tions may result in fire, electric shock, or other hazards.
- Upon completion of any service or repair to this product ask the service technician to perform safety checks to determine that the product is in proper operating condition.
- The product should be situated away from heat sources such as radiators, heat registers, stoves, or other products including amplifiers that produce heat.



Never open the housing. Otherwise there is a risk of a fatal electric shock.

The manufacturer is not liable for accidents to the user opening the unit.

2. Technical data

2.1. Ref. 718001 (Art. Nr. SIP-4)

Hardware	RAM (DDR3)		MB / MHz	512 / 1066
	Memory	NOR & NAND Flash	MB	1 / 128
	Connectors	DVB S/S2 Connector	Nº	4
		USB 2.0		1
		RJ45 100/1000 Mb Ethernet		1
		Reset		1
		ON/OFF switch		1
		DC IN Power supply		1
Software	Control protocols			HTTP
				RTSP & RTCP
				UPnP
	Streaming			Unicast HTTP 1.0 / 1.1
LED	Status LED		Multicast UDP / RTP	
	Streaming LED		Green (ON) / OFF	
			Blue (network connection available) Blinking blue (content will be streamed) OFF (no connection)	
General	Dimensions		mm	247 x 138 x 43
	Weight		g	725
	Working temperature		°C	0 - 40

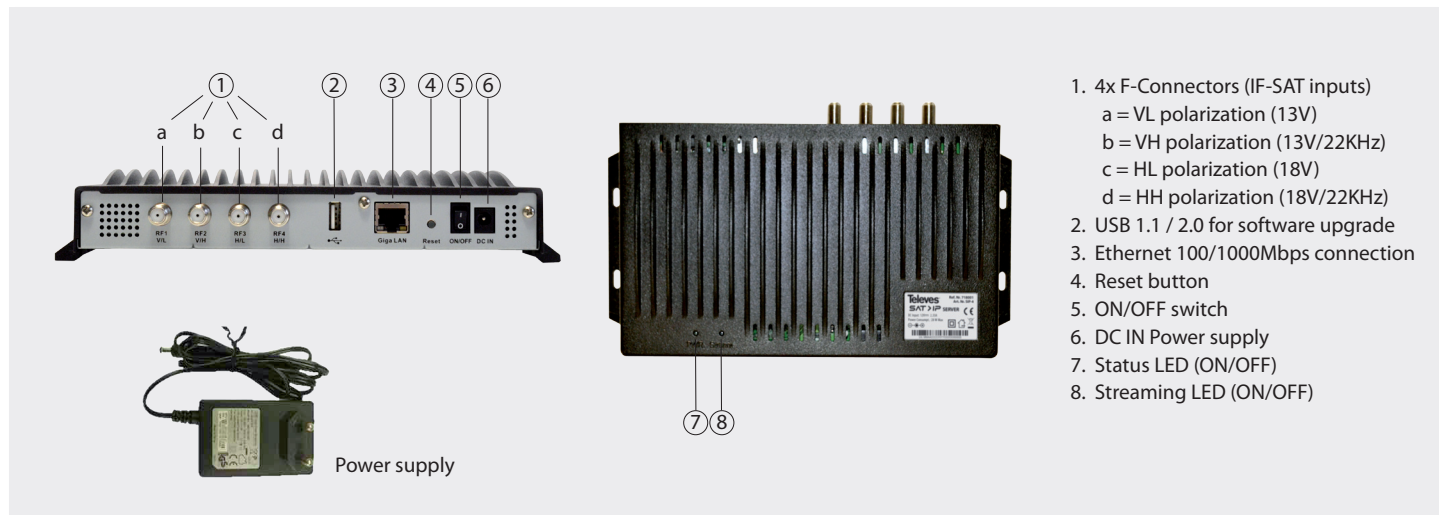
EN

2.2. Ref. 718010 (Art. Nr. SIP-REC1)

Hardware	Connectors	SD	Nº	1
		USB 2.0		2
		RJ45 10/100 Mb Ethernet		1
		HDMI		1
		SPDIF		1
		A/V		1
		Infrared		1
		DC IN Power supply		1
General	Dimensions		mm	130 x 109 x 32
	Weight		g	185
	Working temperature		°C	0 - 40

3. Product description

3.1. 718001 (SIP-4)

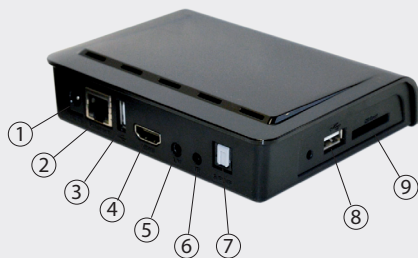


Server 718001 receives up to 4 different FTA transponders (standards DVBS or DVBS2: QPSK or 8PSK) and transmits them through the available network. QUAD, QUATTRO, UNicable, Single (VL input) or Twin (VL and VH) LNBS are compatible with our server.

Up to 4 receivers can be connected to the SAT-IP server. These receivers could be either Wifi or Ethernet wired. We will watch our FTA* transponders on those receivers (Tablets, PCs, laptops, Smartphones, SAT-IP receiver 718010).

(* a paid software might be needed).

3.2. 718010 (SIP-REC1)



1. DC IN Power supply
2. Ethernet connection (100/1000Mbps)
3. USB 1.1/2.0
4. HDMI
5. Audio/Video
6. Infrared
7. SPDIF
8. USB 1.1/2.0
9. SD reader



Power supply



Remote control unit

Key	Function
Power	Shifting between normal and standby modes
Mute	Deactivate sound
Movies/ Photos	Load a file
Music	Load a file
0...9	Select a channel. Direct entry in the menu.
Search	No function associated
Delete	No function associated
Info	Shows current channel information
Home	Shows main menu in the screen
Return	Return key
Menu	Back to the last position of the menu
OK	Executes the selected option in the menu // Confirm changes
CH +-	Move to the next/previous channel
VOL +-	Turn up/down the volume // Select an option in the menu
+<>	Select an option in the menu
PREV NEXT	Previous next track
FR FF	Fast forward max. x32
STOP/PLAY/PAUSE	Control keys in PVR mode
REC	Start recording in PVR mode
ZOOM	Zoom activation
TV	No function associated
AUDIO	Select audio menu
SUBTITLE	Activation of subtitles if available
Colour keys	Control in OSD menu
EPG	EPG activation
TTX	Teletext and its subtitles (TXT) activation, if available

4. Connecting the product

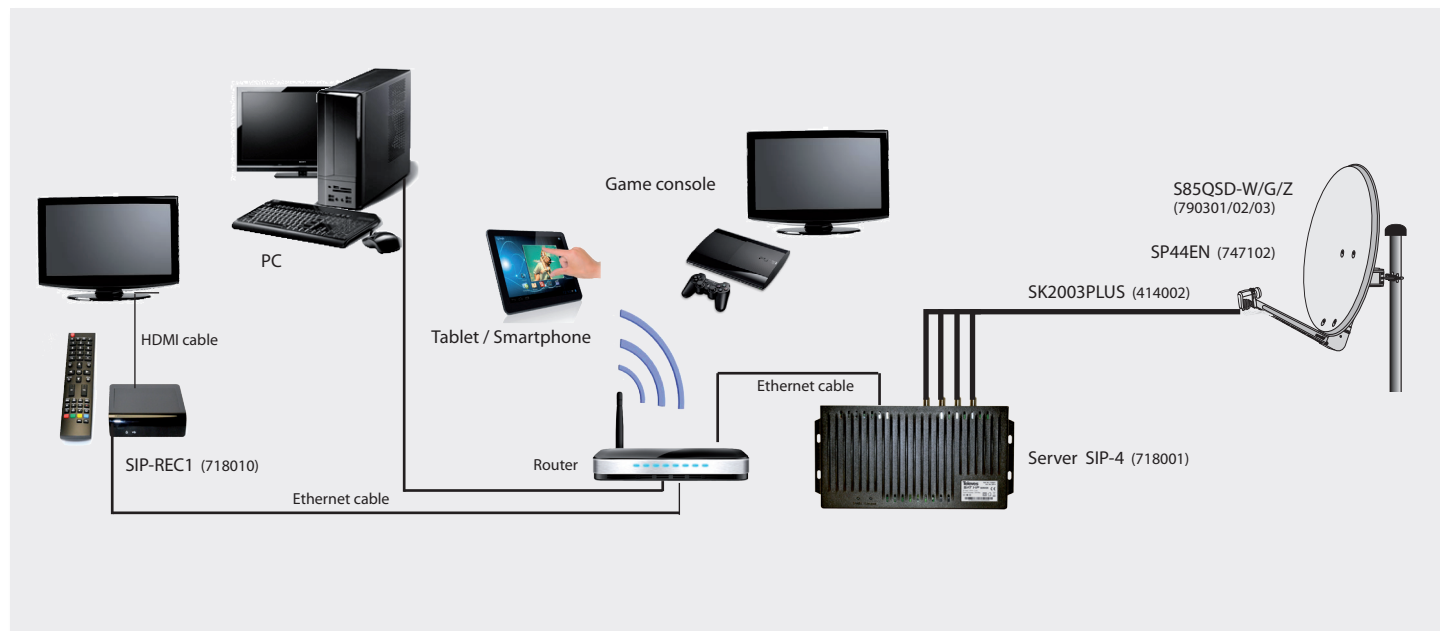
Televes SAT-IP server allows to receive FTA satellite services with a traditional satellite dish.

The dish (7902, 790201, 7903, 790301) must be pointed to the desired satellite. The inputs of the server are marked with the different polarities (HH: horizontal high, HL: horizontal low, VH: vertical high,

VL: vertical low) and are compatible with any type of LNB: QUATTRO or QUAD. If a Single or Unicable LNB is used, it must be connected to the VL input (RF1). In case of a Twin LNB, it must be connected to VL and VH inputs.

The SAT-IP server is to be linked to a router by

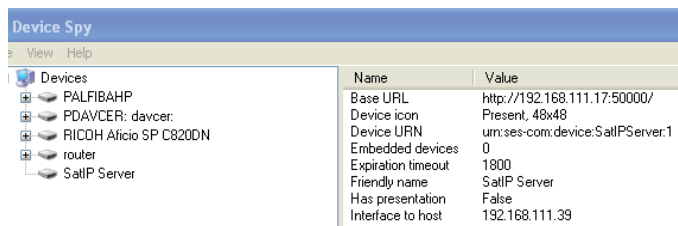
means of an Ethernet cable connected to the RJ45 connector. The satellite programs will be streamed through this router. Up to 4 receivers can be used, connected either via Ethernet or Wifi.



5. Web User Interface (WebUI)

1. Find the SAT-IP server in your network:

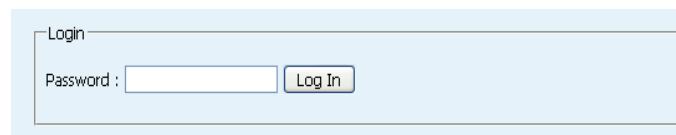
You will need the software tool UPnP, downloadable from:
<http://opentools.homeip.net/dev-tools-for-upnp>
 selecting the file Developer Tools for UPnP Technologies v0.0.65.
 Run the program Device Spy.



The network will be scanned and the SAT-IP server will be shown.
 Click on the SAT-IP server to see all its parameters.
 It is important the URL address (IP address), in the example: 192.168.111.17

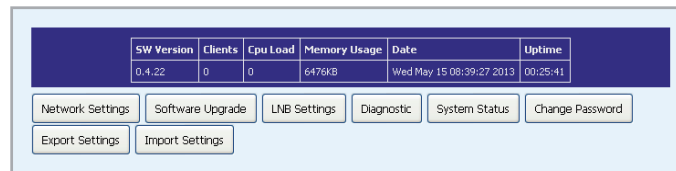
2. Open session:

Open your browser and introduce IP address of the server.
 A new window will be displayed with LOGIN open session. Default password is: satip_admin.



Once the session has been opened, the main menu will be shown with the following information:

SW Version: Software Version of the server.
Clients: Number of users connected.
CPU Load: CPU occupancy.
Memory Usage: Memory use.
Uptime: Duration of network connection.



3. Network Setting:

Network Interface: The default interface of the server is Ethernet. The user shall not to change anything.

IP Settings: Here you can select whether the IP is automatic or static (fixed).

By default it is automatic. For “static” configuration, the user must have knowledge about IP , Netmask, Gateway and DNS . The SAT-IP server does not have any DHCP function, so it is the router that has to handle it.

Time Correction: Select the time zone and the SAT -IP server automatically updates the hour.

Network Settings

Network Interface

Current Satip enabled interface: **eth0** MAC: 00:05:9e:96:53:0e

IP Settings

☒ Automatic ☐ Static

IP: 192.168.111.17

Netmask: 255.255.255.0

Gateway: 192.168.111.2

DNS: 192.168.111.2

Apply Cancel

Time Correction

Time zone: (GMT+01:00) Amsterdam, Berlin, Bern, Rome

Correct time from SNTP server

4. Software Upgrade:

The update is via the web interface or internet. For an online update, just select “Enable”. The SAT -IP server will automatically search for the latest software version.

5. LNB Settings:

Unless a Unicable-LNB is used, no change should be needed. Local oscillator frequencies are preprogrammed: 10600MHz for high band and 9750MHz for low band.

If a Unicable-LNB is used, select option “Unicable” and select the desired frequency. Finally click on “Apply”.

Note : In this application, the Unicable LNB should be connected to the VL input (a).

LNB Settings

LNB Type: ☒ Unicable ☐ Quattro ☐ Quad/DISEqC

UB slot UB_1 Frequency 1210 MHz

UB slot UB_2 Frequency 1420 MHz

UB slot UB_3 Frequency 1680 MHz

UB slot UB_4 Frequency 2040 MHz

Apply Reset to Default

LNB Settings

LNB Type: ☐ Unicable ☐ Quattro ☒ Quad/DISEqC

Frequency 11700 MHz divides High band and Low band

LO for High band 10600 MHz

LO for Low band 9750 MHz

Apply Reset to Default

LNB Settings

LNB Type: ☐ Unicable ☒ Quattro ☐ Quad/DISEqC

Frequency 11700 MHz divides High band and Low band

LO for High band 10600 MHz

LO for Low band 9750 MHz

Apply Reset to Default

6. Diagnostic:

SAT-IP tuners support two different modes: Dynamic or Static. By default, the server is in Dynamic mode. In Dynamic mode the tuners will be adapted automatically to the different requests from the receivers, while in static mode the user will configure those parameters manually in the server:

Intermediate frequency: In MHz.

Symbolrate: In Ksym/s.

Polarisation: Vertical/Horizontal.

Multicast Address: Streaming IP.

PID List: The user must introduce identifiers such as PAT, PMT, audio and video PIDs...

LNA: Signal amplification. It is recommended to leave the default value.

Diagnostics

Tuner 1 Settings:
☒ Dynamic ☐ Static
 LNA: 12dB (default) [v]
 [Apply] [No lock]

Tuner 2 Settings:
☒ Dynamic ☐ Static
 LNA: 12dB (default) [v]
 [Apply] [No lock]

Tuner 3 Settings:
☒ Dynamic ☐ Static
 LNA: 12dB (default) [v]
 [Apply] [No lock]

Tuner 4 Settings:
☒ Dynamic ☐ Static
 LNA: 12dB (default) [v]
 [Apply] [No lock]

Diagnostics

Tuner 1 Settings:
☐ Dynamic ☒ Static
 Frequency: 01074 MHz
 Symbol Rate: 22500 Ksym/s
 Polarisation: horizontal [v]
 Multicast Address: 239.0.1.3 port 4
 Pid List: 0,123,145,777
 LNA: 12dB (default) [v]
 [Apply] [No lock]

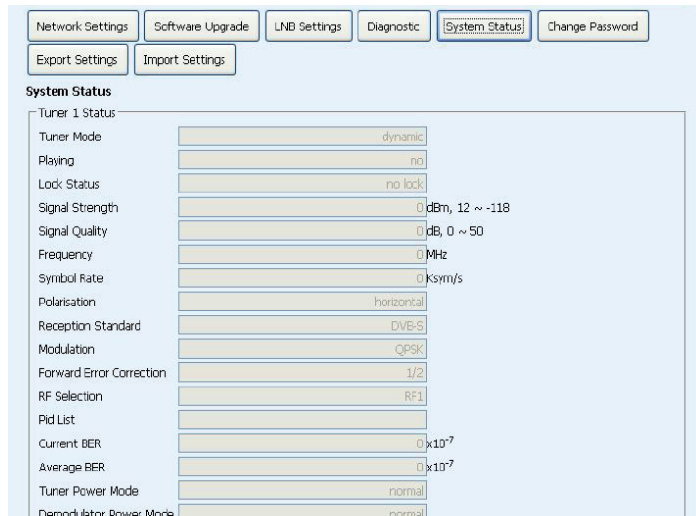
Tuner 2 Settings:
☒ Dynamic ☐ Static
 LNA: 12dB (default) [v]
 [Apply] [No lock]

Tuner 3 Settings:
☒ Dynamic ☐ Static
 LNA: 12dB (default) [v]
 [Apply] [No lock]

Click "Apply" to confirm all changes. If any parameter is not correct, "No lock" message will be shown.

7. System Status:

General view of all parameters to be checked.



8. Password change:

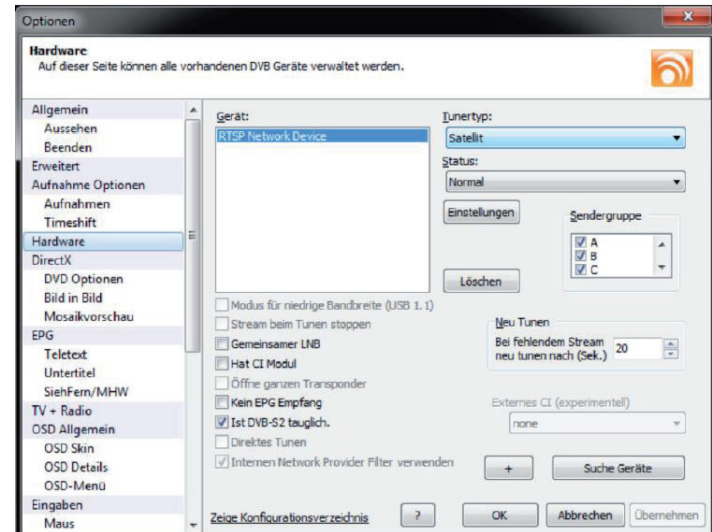
Allows to change the default password. The user will need to introduce the old password and the new password twice.

9. Export/Import parameters:

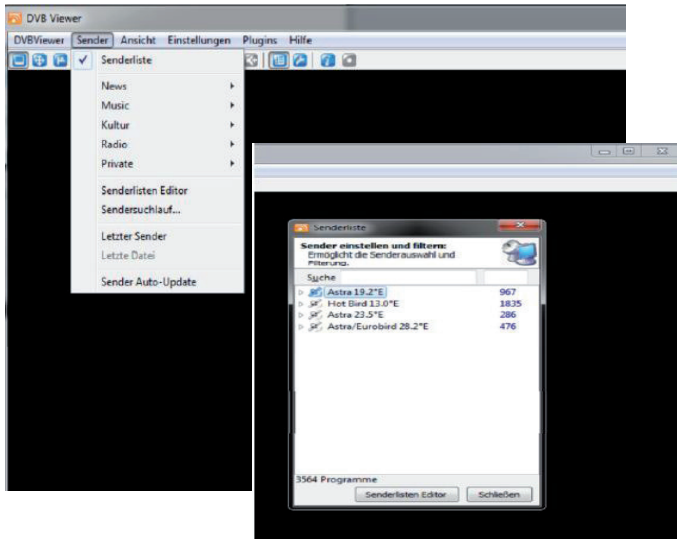
It allow to Save the configuration parameters of the SAT-IP on a XML table, or load the table into a new SAT-IP server.

6. TV on a PC

You need to download a paid software from <http://www.dvbviewer.com/en/index.php> not. Please note that demo version is not valid!



- Select **Options** menu.
- Select **Hardware**.
- Press key + at the bottom right and type **1**.
- A RTSP device will be shown at the top left of the screen.
- If you also wanted to record with DVB Viewer, you must add a second RTSP device. (It is possible to watch a program and record another).
- Press **Configuration** key at the top. The SAT-IP server will be located and press **OK** to confirm once found (repeat this process for each SAT-IP server).



- Once this configuration is successfully finished, select Transmitter List in the menu bar.
- Select the satellite by clicking on it.
- The selected transmitter will be played.

7. TV on iPad/ Tablet

To receive the SAT-IP services on an Android or Apple device, a paid APP is needed: SAT>IP APP.
For example "Elgato-TV for Android" or "eyetv app Elgato" for iPhone y iPad.
Those APPS are available in the APP-Store.

- Run SAT>IP APP and select **Configuration** menu.
- Press Transmitter search.
- Select your country.



- Select your satellite.
- Start scan or load a list from the Internet.
- Once it has found the channels, quit the Configuration menu.

- Open Live-TV menu to watch the programs with EPG.



- Select the program to watch.



televes.com