

# EDISION®



***progressiv***

**DVB**T2/C

***hybrid lite LED***

FullHD DVB-C/T2 Receiver



## User's Guide



# CONTENTS

|   |       |
|---|-------|
| ► Safety .....                                    | 4-5   |
| ► Remote control .....                            | 6     |
| ► Description .....                               | 7     |
| ► Features .....                                  | 8     |
| ► Information bar (InfoBar) .....                 | 9     |
| ► EDIVISION – Your electronic program guide ..... | 10-11 |
| ► Channel.....                                    | 12    |
| Edit channel .....                                | 12    |
| Edit favourites .....                             | 14    |
| ► Installation .....                              | 16    |
| Terrestrial Installation .....                    | 16    |
| Cable Installation .....                          | 18    |
| Network ID Scan .....                             | 18    |
| ► Menu system settings .....                      | 18    |
| Language .....                                    | 18    |
| A/V Control.....                                  | 19    |
| Time setting.....                                 | 19    |
| Timer .....                                       | 20    |
| Parental Control .....                            | 21    |
| Factory setting.....                              | 21    |
| Information .....                                 | 22    |
| ► System .....                                    | 22    |
| Software Update .....                             | 22    |
| Miscellaneous Settings .....                      | 24    |
| Card information .....                            | 24    |

|                          |           |
|--------------------------|-----------|
| ► <b>Media</b> .....     | <b>25</b> |
| File List.....           | 25        |
| Memory Information ..... | 25        |
| Check-Speed USB .....    | 26        |
| USB Safely Remove .....  | 26        |
| ► <b>Internet</b> .....  | <b>27</b> |
| Ethernet Settings.....   | 27        |
| YouTube .....            | 28        |
| Web TV .....             | 28        |
| Pss Reader .....         | 28        |
| Weather Forecast.....    | 29        |
| Google Maps .....        | 29        |





## ► Important safety instructions

- 1) Please read these instructions carefully.
- 2) Keep these instructions in a safe place for future reference.
- 3) Pay extra attention to «warning» points.
- 4) Follow all instructions.
- 5) Do not use the device near water.
- 6) Clean with a dry cloth only.
- 7) Do not use near heat sources, such as radiators, heat accumulators, ovens or other devices (including amplifiers) generating heat.
- 8) Only operate this product with the type of power source indicated on the label. If you are unsure about the type of power supply you use at home, ask your electricity supplier. Disconnect the device from the mains before maintenance or installation procedure.
- 9) Protect the mains cable from damage.
- 10) Only use auxiliary devices/accessories specified by the manufacturer.
- 11) Disconnect the device during thunderstorms or extended periods of non-use.
- 12) All maintenance work should be carried out by qualified service personnel. Maintenance is required when the device is damaged in any way, including damage to the mains cable or mains plug. Also in case the device becomes exposed to liquids or moisture, was dropped or does not function properly.
- 13) Make sure that the ventilation slots are always unobstructed.
- 14) Attention should be paid to the environmental aspect of battery disposal.
- 15) Only use the device in moderate climate.

WARNING: In order to avoid the risk of fire or electric shock, do not expose this device to rain or moisture.

WARNING: The batteries should not be exposed to excessive heat and heat sources such as direct sunlight, fire, etc.



-  This symbol indicates that there is risk of electric shock.
-  This symbol indicates that the operating instructions contain important operating and maintenance information.
-  This symbol indicates that the product has a double insulation between voltage and user accessible parts. Only use parts provided by the manufacturer during repair.
-  This symbol on the product or in the operating instructions indicates that the electrical or electronic device must be disposed of separately from household waste at the end of the service life. Separate collection systems exist for recycling.

For further information, please contact your local authorities or your dealer where you purchased the product.

## ► Remote control



On / Off button



Mute On/Off



Selection of TV/Radio program.  
Input of numbers or letters in  
the menus



Toggles between TV and Radio mode



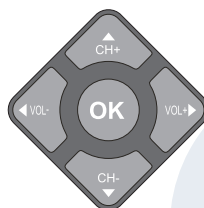
Returns to the previous program



Displays the main menu



Displays the information bar



Use the arrow buttons to navigate through  
the menu. UP and DOWN buttons change  
the channel while LEFT and RIGHT but-  
tons change the volume. The OK button  
displays the Channel List and confirms  
a selection



Exits a Menu/Dialogue window.



Selection of the electronic program  
guide EDIVISION.



Program List Search



Displays a file list



Channel List  
Scroll Forwards or  
Backwards



Displays the favourite lists



Displays the satellite lists



Changes the TV display format



Allows fast backward



Allows fast forward



Moves to the beginning  
or previous Recording / Image  
Moves to the end  
or next Recording / Image



Starts recording manually



Starts playback / Pauses playback



Finishes TimeShift, a recording  
or a playback



Calls up the Audio menu



Option button. Switching between  
TV/AV mode (Not in HDMI mode).



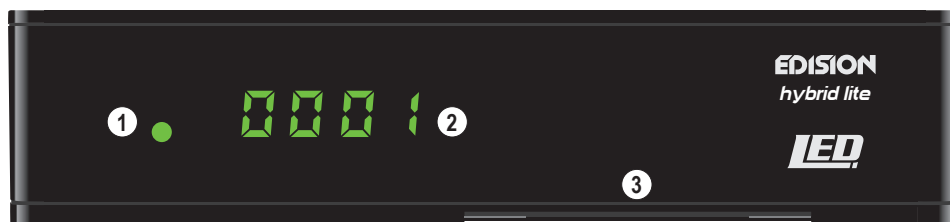
Calls up the Subtitle / Teletext menu



WebTV button

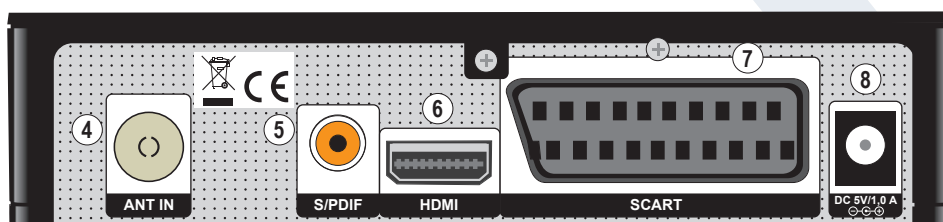
## ► Description

### Front Panel



- ① Infrared sensor for the reception of remote control commands
- ② Display LED, displays current information
- ③ Card reader

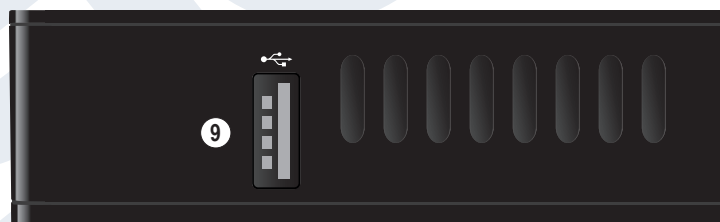
### Back Panel



- ④ ANT IN: Input for connecting the signal from the antenna
- ⑤ S/PDIF: Audio interface for amplifier/audio console
- ⑥ HDMI: Connection to an HDTV quality TV
- ⑦ SCART: For connecting to a TV set, using SCART cable [not for HD TV]
- ⑧ Connection for an adapter (DC 5V / 1,0A)

### Subpage

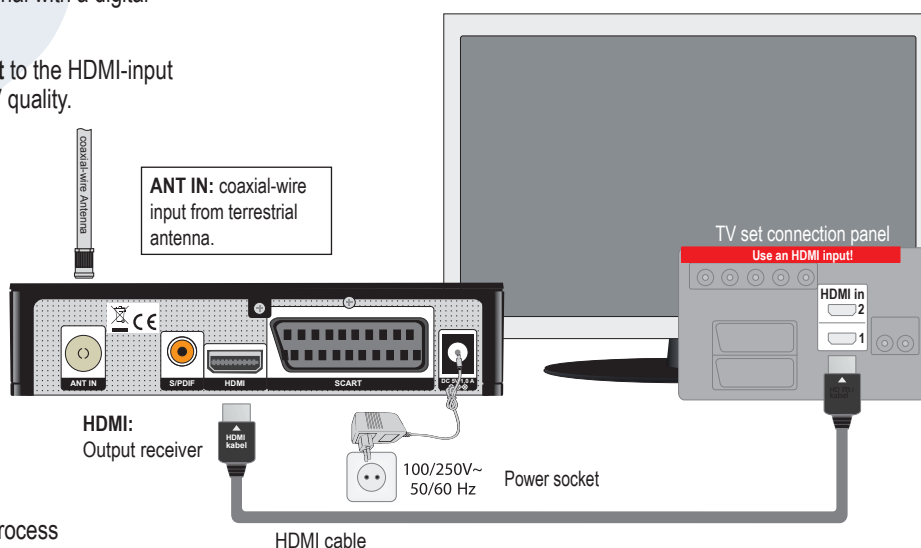
- ⑨ USB: Connection for USB storage devices



## Connecting and switching on

**Note:** For trouble-free signal reception your antenna and cable installation should be calibrated and inspected by a qualified professional with a digital TV-level-measuring instrument.

- Connect the receiver's **HDMI-output** to the HDMI-input of your television set (TV), for HDTV quality.
- Then connect the coaxial cable from the terrestrial antenna to the **ANT IN** input of the receiver.
- Insert the batteries into the remote. Further information you will find at the back of this instruction manual.
- Connect the receiver to the mains power supply network, by means of its power supply unit included in the package.
- The receiver starts with the BOOT-process and will be ready for you to enjoy in a few minutes.

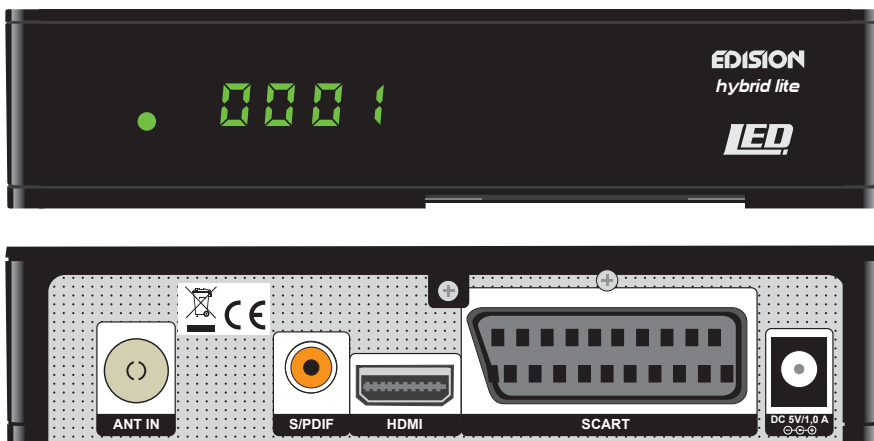


## Language Selection



## ► Features

- Type: DVB-T2 / DVB-C, Hybrid Full HD receiver.
- Digital Terrestrial, Mpeg-4.
- Resolution 480p, 576p, 720p/50Hz, 720p/60Hz, 1080i/50Hz, 1080i/60Hz, 1080p/50Hz, 1080p/60Hz TV-Standard
- 1 x Card Reader
- 1 x HDMI Output for Full HD video/audio
- 1 x SCART
- 1 x USB
- RF in
- LED Display
- 6000-TV/radio channels memory.
- PAL/NTSC Auto-switch.
- Multilingual OnScreenDisplay.
- EDIVISION electronic program guide.
- Supports Picture In Grafik (PIG)
- Channel Edit and Favourite lists.
- Auto and Manual channel search.
- Αυτοματοποιημένος χρονοδιακόπτης On/Off
- 3G Connection (με USB 3G Modem)
- Wifi Connection (μόνο με WiFi USB Dongle)
- PVR μέσω USB
- Επιλογή Time Shift
- Subtitle support.
- Teletext support.
- Last channel selection auto-save.
- Software backup and Upgrade, via USB.
- Supports FAT 16/32, NTFS
- Parental Control.
- Eco-mode standby 0,8 Watt
- 100~240V Voltage, 50Hz/60Hz
- Media player MP3/JPEG/BMP/AVI/DivX/VOB/MKV
- Dimensions: 145x120x35 mm (Π x Β x Υ)
- Color: black
- Warranty: 2 years.



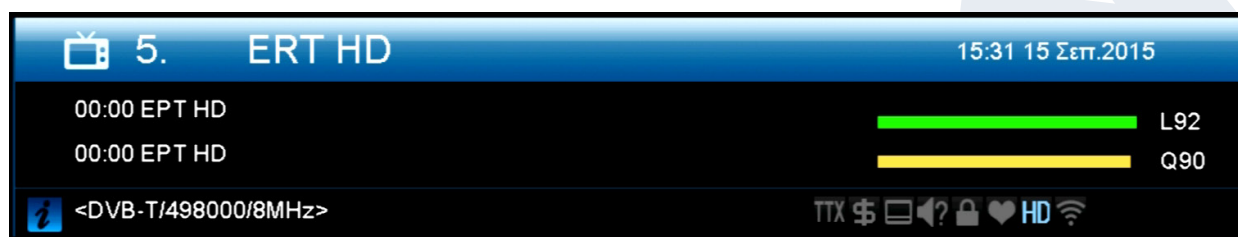


## ► Information bar (InfoBar)

When in the TV/Radio mode, the **'INFO' button** displays an information bar (InfoBar) at the lower edge of the screen. This bar is faded-in up to 10 seconds.

### How to change the duration of fading of the information bar:

1. Press the **'MENU' button** to open the main menu.
2. Use the **left/right** arrow buttons to navigate to the 'System' item.
3. Use the **up/down** arrow buttons to navigate to the 'Other settings' menu item and press the **OK button**.
4. Use the **left/right** arrow buttons to select the value in seconds you want to set (max. 10s) in the 'OSD time exceeded' item.
5. Press the **EXIT button** to exit the menu.



The InfoBar in TV or Radio mode shows the following information about the current program and selected station:

- the place in the program list
- the name of the station
- the current program (as far as information is available) including start time
- the following program (as far as information is available) including start time
- the name of the favourite list
- the time



- indicates the availability of Teletext for the current program
- indicates if the transmitted program is encrypted
- indicates if subtitles are available
- indicates if the sound broadcasted is in stereo or mono format, left or right balance
- indicates if the program is blocked (child protection)
- indicates that the station is present in a favourite list
- indicates if the program is transmitted in HD
- indicates if Wi-Fi network connection exists

### Functions and settings:

If the InfoBar is displayed, detailed information about the current program can be displayed (if available) by (repeated) pressing the **'INFO' button**. If multiple information pages are available, scroll through these pages by using the **'PAGE+'/'PAGE-' buttons**. Use the **left/right** arrow buttons to switch between the information of the current and next program. Use the **red button** to display further (technical) information. Use the **EXIT** button to exit the menu with the detailed information.

Use the **EXIT button** again to switch off the InfoBar.

## ► EDIVISION - Your electronic program guide

**Standard:** EDIVISION is an electronic program guide with its own OSD menu. EDIVISION presents the information provided by the service provider in detailed views. In addition, up to 8 time-controlled recordings (Timer) can be programmed from here. Note that not all channels/program providers provide program-related information.

Use the **EDIVISION button** on the remote control to start your program guide.

### Functions and settings:

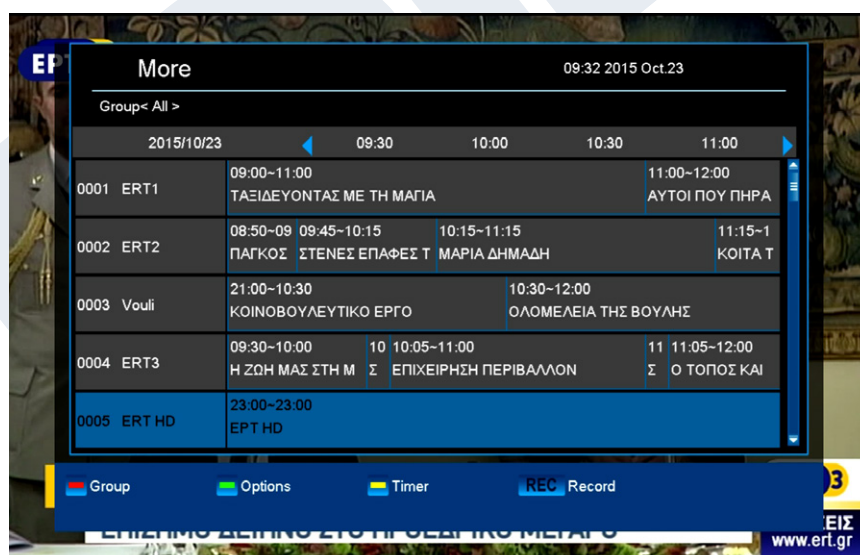


The window of 'EDIVISION' is structured differently, depending on in which mode you are.

The mode (now, next, more, timetable) can be changed with the **green button**.

Information can be found at the top left in the modes 'Now' and 'Next' on the current or next program and on the channel in text format, at the top right, the current TV picture (in TV mode). In the lower area, the current program list can be found which can be navigated with the **up/down** arrow buttons and another channel can be chosen with the **OK button**. If the channel provides program-

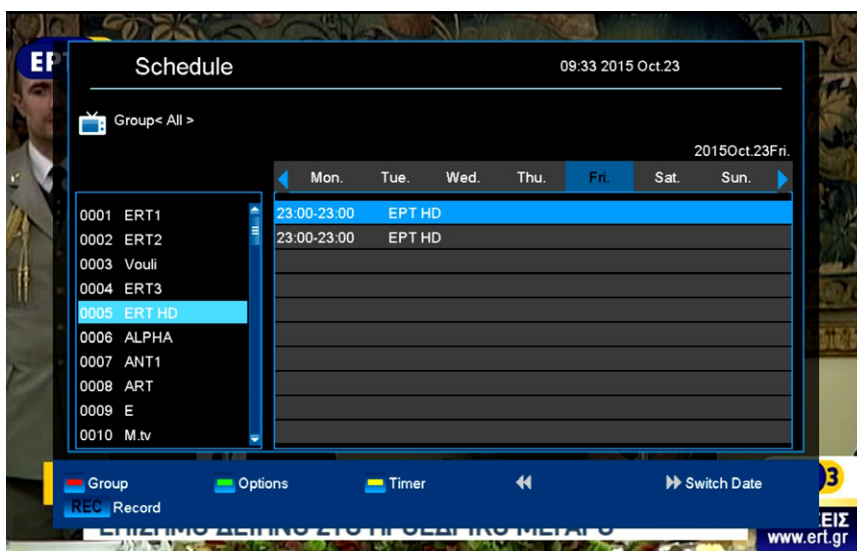
related information, it will be displayed in the list (e.g. duration of the program in form of bars, program title). Press the **OK button** to display detailed information about the program, if available. Use the **left/right** arrow buttons to switch between 'Now' and 'Next' EDIVISION modes.



The 'More' mode displays program information in chart form and chronological order. Use the **left/right** arrow buttons to navigate between a channel's temporal program information and use the **up/down** arrow buttons to move the cursor (yellow marking) in the channel list. The **OK button** may possibly have to be pressed if another channel was selected and the program-related information should be displayed (if available). If the cursor is located on the right-hand side of a program title, detailed information about this program can be displayed by pressing the

### OK button.

The 'Timetable' mode displays the currently selected program list in chart form on the left and program information in weekly format on the right. Use the **left/right** arrow buttons.



## EDIVISION window in 'Timetable' mode

To navigate in the channel list and by using the **PREV/NEXT** buttons to navigate with daily overview.

Use the **up/down** arrow buttons to navigate between the weekdays in the respective list. If the cursor is located on the right-hand column side of a program title, even more detailed information about this program can be displayed (if available) by pressing the **OK** button.

The following functions and buttons can be used in all modes:

The **red button** displays an overview of the existing channel lists (groups). Use the **arrow buttons** to navigate through this overview and the **OK button** to set the channel list to be used by EDIVISION.

The **green button** calls up a menu allowing to switch between the different views of EDIVISION by using the **up/down** arrow buttons and the **OK button**.

The **yellow button** calls up a Popup Timer Menu. Select the 'VCR' item to program time-based events (e.g. recordings). Select the item Timer List to see the programmed events.

If you want to make a recording on a certain date in the future, select the item 'USB/HDD Recorder'. Use the **up/down** arrow buttons in the following window to navigate between the menu items and the **left/right** arrow buttons and **OK button** to set the values. The following settings can be made in the menu 'Timer'.

Timer number: Calling up the timer menu automatically switches to the next (available) programmable timer. Use the left/right arrow buttons the OK button and the up/down arrow buttons to switch between timers. Up to 8 different events can be programmed.

**Timer mode:** Set the recording mode here. Choose whether the recording is carried out once, daily, weekly or monthly.

**Timer service:** Set the service entry 'Recording TV channel' here for a TV recording and 'Recording Radio channel' for a radio recording.

**Station:** Set the channel here.

**Date:** Set the start date of the recording here.

**Start time:** Set the start time here.

**Duration:** Set the duration of the recording here (recording length).

After making changes and in order to keep them, confirm with 'Yes' in the appearing dialogue window. Exit the timer menu with the **EXIT button**.

**Note:** An error message appears under certain circumstances. As a rule, an incorrect start time or start date was given. Check the information!

Also note that a recording is only possible if a corresponding USB memory device is already connected to the receiver.

Exit 'EDIVISION' by pressing the **EXIT button**.

## ► Menu program

### ► Channel

### ► Menu Installation

### ► Settings

### ► System

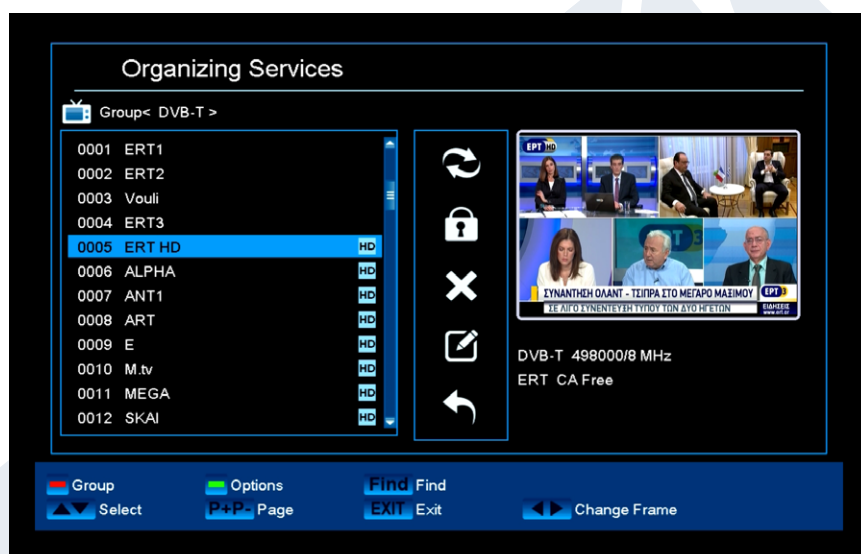
### ► Media

### ► Internet

## ► Channel

### ► Edit channel

### ► Edit favourites



### Edit channel

Your channel list(s) for TV or Radio channels can be customized in this menu.

**Notes:** Make sure the receiver is in the correct mode. If wanting to edit radio channel lists, the receiver must be in radio mode. The **TV/Radio button** enables switching between TV and Radio mode.

**Standard:** The left column of the menu window shows the list of the channels of the currently selected channel list, the right column shows the symbols for

'Move', 'Lock', 'Delete', 'Rename' and 'Skip'.

### Functions and settings in the menu:

Use the **left/right** arrow buttons to switch back and forth between the columns in the menu window, the **up/down** arrow buttons to move the cursor up or down in the respective column.

Mark one or more channels in the left column by pressing the **OK button**. Use the **red button** to display an overview of all channel lists/channel groups and enable an appropriate selection. The window overview displays the list in which you currently are.

The **green button** displays other possible options. The following options are available:

Select all: All channels are selected.

Deselect all: All channels are deselected.

Select other: All channels are selected that were previously not selected.

Select TP: All channels of a transponder can be selected here.

The **'FIND' button** allows quick search for channel (names). A search window appears after pressing this button. Entry into the search field is done via a letter or numeric field actuated with the **arrow buttons** and by pressing the **OK button**. Provided that channels with appropriate initial characters are found in the current list, they will be displayed on the left-hand side. Exit the search window with the **EXIT button**.

#### How to move a channel:

1. Move the cursor (yellow bar) in the channel list to the channel to be moved.
2. Change now with the **right** arrow button in the right part of the menu and navigate the cursor with the **up/down buttons** to the 'Move' symbol. The symbol is highlighted in colour.
3. Press the **OK button**.
4. Use now the **up/down** arrow buttons to move the selected channel in the list. It is also possible to use the **page buttons**.
5. By pressing the **OK button**, the channel remains at the new position and exits the 'Move' mode.

**Tip:** It is possible to move multiple channels simultaneously by selecting the respective channels first in the channel list (left menu page) with the **OK button** and then carrying out steps 2-5 as explained above.

#### How to lock a channel:

1. Move the cursor (yellow bar) in the channel list to the channel to be locked.
2. Change now with the **right** arrow button in the right part of the menu and navigate the cursor with the **up/down buttons** on the 'Lock' symbol. The symbol is highlighted in colour.
3. Press the **OK button**. The 'Lock' symbol appears now in the channel list behind the channel name.

**Tip:** It is possible to lock multiple channels simultaneously by selecting the respective channels first in the channel list (left menu page) with the OK button and then carrying out steps 2-3 as explained above.

#### How to unlock a channel:

1. Move the cursor (yellow bar) in the channel list to the locked channel.
2. Change now with the right arrow button in the right part of the menu and navigate the cursor to the 'Lock' symbol. The symbol is highlighted in colour.
3. Press the OK button. Enter 0000 or the code specified by you and the channel is unlocked. The 'Locked' symbol is removed from the channel list.

**Tip:** It is possible to unlock multiple channels simultaneously by selecting the respective channels first in the channel list (left menu page) with the OK button and then carrying out steps 2-3 as explained above.

#### How to delete a channel:

1. Move the cursor (yellow bar) in the channel list to the channel to be deleted.
2. Change now with the right arrow button in the **right** part of the menu and navigate the cursor to the 'Delete' symbol. The symbol is highlighted in colour.
3. Press the **OK button**. The channel is removed from the list.

**Tip:** It is possible to delete multiple channels simultaneously by selecting the respective channels first in the channel list (left menu page) with the **OK button** and then carrying out steps 2-3 as explained above.

#### How to name a channel:

1. Move the cursor (yellow bar) in the channel list to the channel to be renamed.
2. Change now with the **right** arrow button in the right part of the menu and navigate the cursor to the 'Rename' symbol. The symbol is highlighted in colour.
3. Press the **OK button**.
4. A window appears with the input field. Select the character and letter with the **arrow buttons** and OK button. The last character (your input) can be deleted by navigating the cursor to the '<'



character in the letter field. A space is added by navigating with the arrow buttons to the character. Confirm your entry by navigating with the **arrow buttons** to the 'OK' area. The new name is now added to the channel list. The input window can be exited at all times by using the **EXIT button** and thereby cancelling the process.

### Skip channel

If a channel in the list should not be deleted and also not be displayed, simply skip this channel when scrolling through the list.

#### How to select a channel to be skipped:

1. Move the cursor (yellow bar) in the program list to the channel selected to be skipped (not to be displayed).
2. Change now to the right part of the menu and navigate the cursor to the 'Skip' symbol. The symbol is highlighted in colour.
3. Press the **OK button**. The program list now displays the 'Skip' character behind the channel name, i.e. when scrolling through the list during TV or Radio mode, the channel will be skipped.

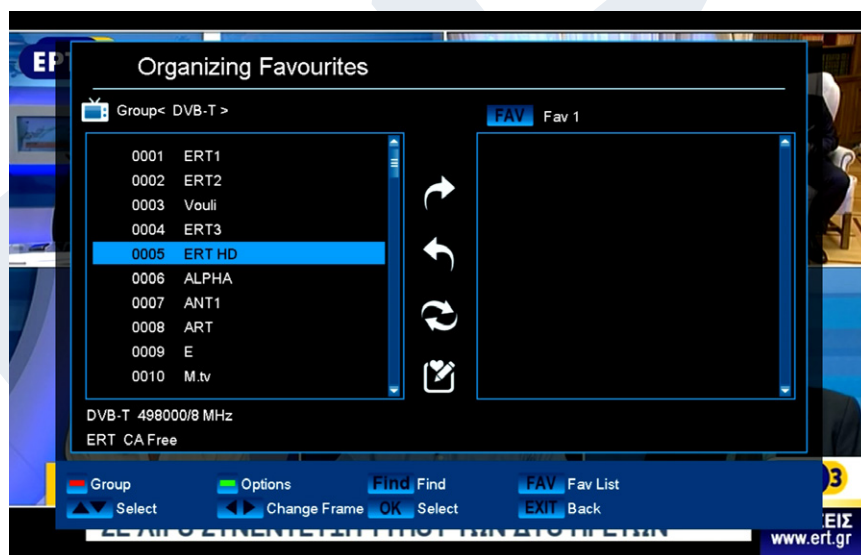
Exit the 'Edit channel' menu by pressing the **EXIT button**. If changes were made, a dialogue window appears prompting you to confirm these changes. The changed settings are saved by selecting 'Yes'.

**Note:** Channel is only deleted, moved and/or locked upon confirmation with 'Yes'. NO changes are saved when selecting 'No'.

### Edit favourites

Your favourite lists for TV or Radio programs can be customized in this menu in order to suit your personal choices.

**Standard:** This menu is divided into 3 columns. The list of the available channels can be found on the left side, depending on the overview selected. The currently selected favourite list can be found on the right side. The 'Add', 'Remove', 'Move' and 'Rename' symbols can be found in the centre.



#### Functions and settings in the menu:

Use the **left/right arrow buttons** to switch back and forth between the columns in the menu window, the **up/down arrow buttons** to move the cursor up or down in the respective list. Select one or more channels by pressing the **OK button**.

When in the left column, it is possible to display an overview of all lists (except the favourite list) with the **red button** and select another group/list with the

**arrow buttons** and **OK button**. The title of the left column shows the list currently displayed.

The **green button** displays other possible options for channel lists. The following options are available:

- Select all:** All channels are selected.
- Deselect all:** All channels are deselected.
- Select other:** All channels are selected that were previously not selected.
- Select TP:** All channels of a transponder can be selected here.

When in the left column, the **'FIND' button** enables quick search of channel names. The search window appears after pressing this button. Entry into the search field is done via a letter or numeric field actuated with the **arrow buttons** and by pressing the **OK button**. Provided that channels with appropriate initial characters are found in the list, these will be displayed on the left-hand side. Exit the search window with the **EXIT button**.

The **'FAV' button** enables switching of the favourite list in order to view or edit it. Press the **'FAV' button**, to display the overview of the favourite lists. Use the **up/down arrow buttons** and **OK button** to select the favourite list to be edited. The list will then appear on the right side of the menu. The channels are marked on the left side with a symbol already available in the selected favourite list.

#### How to add a channel to a favourite list:

1. Move the cursor (yellow bar) in the channel list in the left menu window to the channel to be added.
2. Change now to the central part of the menu and navigate the cursor to the 'Add' symbol. The symbol is highlighted in colour.
3. Press the **OK button**. The channel is inserted at the end of the favourite list. The channel is marked with a symbol on the left side of the menu.

**Tip:** It is possible to add multiple channels simultaneously to the favourite list by selecting the respective channels first in the channel list (left menu page) with the **OK button** and then carrying out steps 2-3 as explained above.

#### How to remove a channel from a favourite list:

1. Move the cursor (yellow bar) in the favourite list in the right menu window to the channel you want to be removed.
2. Change now to the central part of the menu and navigate the cursor to the 'Remove' symbol. The symbol is highlighted in colour.
3. Press the **OK button**. The channel is removed from the favourite list. The channel is no longer marked with a symbol on the left side of the menu.

**Tip:** It is possible to remove multiple channels simultaneously from the favourite list by selecting the respective channels first in the favourite list (right menu page) with the **OK button** and then carrying out steps 2-3 as explained above.

#### How to move a channel in a favourite list:

1. Move the cursor (yellow bar) in the favourite list in the right menu window to the channel to be moved.
2. Change now to the central part of the menu and navigate the cursor to the 'Move' symbol. The symbol is highlighted in colour.
3. Press the **OK button**.
4. Use now the **up/down arrow buttons** to move the selected channel. The channel now moves up and down in the list.
5. By pressing the **OK button**, the channel remains at the new position and exits the 'Move' mode.

**Tip:** It is possible to move multiple channels simultaneously by selecting the respective channels first in the channel list (left menu page) with the **OK button** and then carrying out steps 2-5 as explained above.

#### How to name a favourite list:

1. Press the **'FAV' button** and select the favourite list to be renamed.
2. Change now to the central part of the menu and navigate the cursor to the 'Rename' symbol. The symbol is highlighted in colour.
3. Press the **OK button**.
4. A window appears with the input field. Select the character and letter with the **arrow buttons** and **OK button**. The last character (your input) can be deleted by navigating the cursor to the

'<-' character in the letter field. A space is added by navigating with the arrow buttons to the character '--'. Confirm your entry by navigating with the **arrow buttons** to the 'OK' area. The input window can be exited at all times by using the EXIT button and thereby cancelling the process.

Exit the 'Edit favourites' menu by pressing the **EXIT button**. If changes were made, a dialogue window appears prompting you to confirm these changes. The changed settings are saved by selecting 'Yes'.

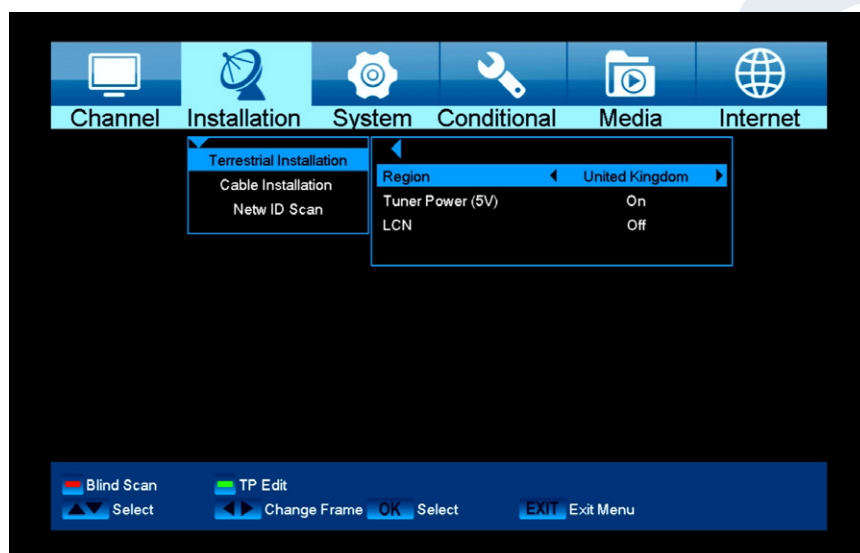
Note: Upon confirmation with 'Yes', channels are only deleted, moved and/or added from/to favourite lists or names of favourite lists are changed. NO changes are saved when selecting 'No'.

## ► Menu installation

### ► Terrestrial Installation

### ► Cable Installation

### ► Network ID Scan



### Terrestrial Installation

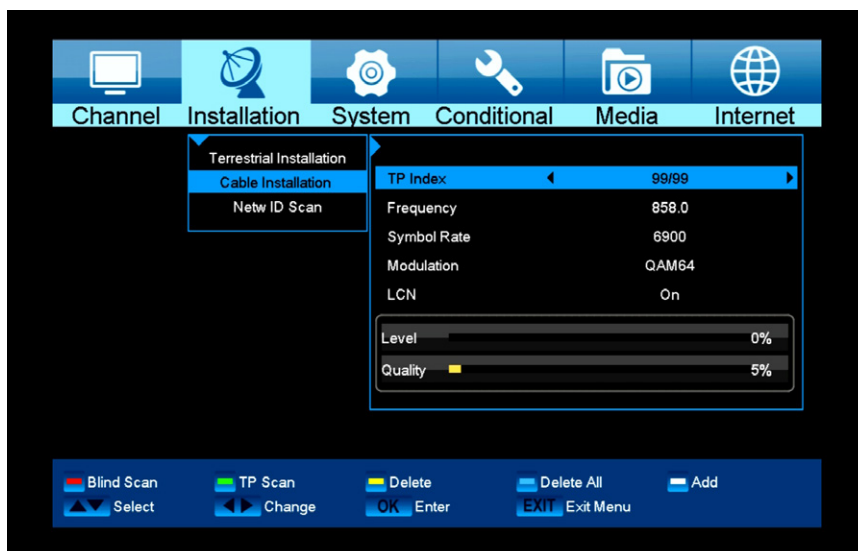
Press [OK] key to enter the selected item.

- 1 You can select the Bandwidth by region (country).
- 2 You can set the Tuner Power ON/OFF.
- 3 Press [Red] key can directly into blind scan mode to scan the current programs.
- 4 Press [Green] key to enter the following menu.

Scan Mode.

- 1 There are two modes. You can scan channel by channel or by frequency".
- 2 When scan band is UHF and region is "France", the range of Ch No. is from 21 to 69.
- 3 When scan Band is VHF and region is "France", the range of Ch No. is from 1 to 9. (it's according to region)
- 4 Press [Red] key to enter blind scan menu, or press [Green] key to enter TP scan menu.
- 5 Press [Exit] key to exit the scanning.

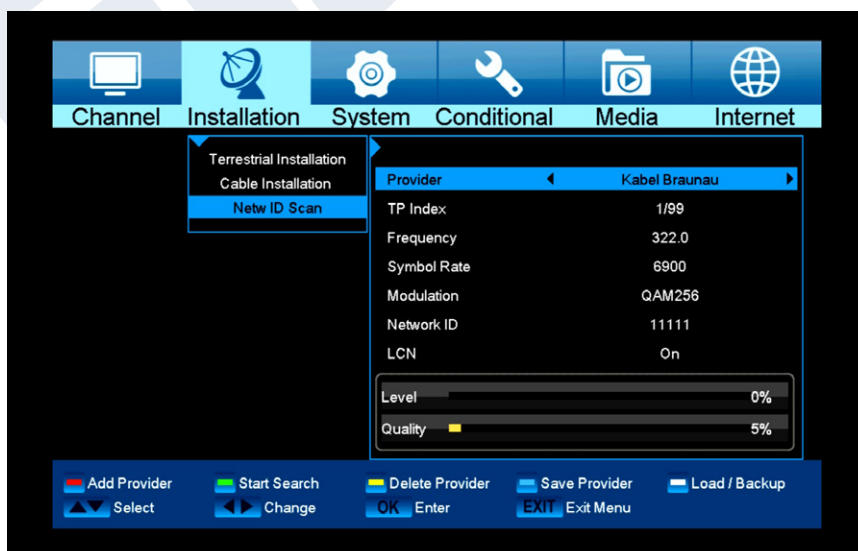




### Cable Installation

Press [OK] key to enter the selected item.

- 1 You can select the Scan Mode, Manual Scan or Blind Scan.
- 2 You can input the Frequency by use the numeric button of the RCU.
- 3 You can input the Second Frequency by use the numeric button of the RCU, if you set the Scan Mode to Blind Scan.
- 4 You can input the Symbol Rate by use the numeric button of the RCU.
- 5 You can select the QAM value among 16QAM, 32QAM, 64QAM, 128QAM and 256QAM.
- 6 You can turn ON or OFF the NIT Search, if you set the Scan Mode to Manual Scan.
- 7 When you complete your modification, press OK button on Search item to enter Scan menu and then.
- 8 Press OK button, it will begin to scan.

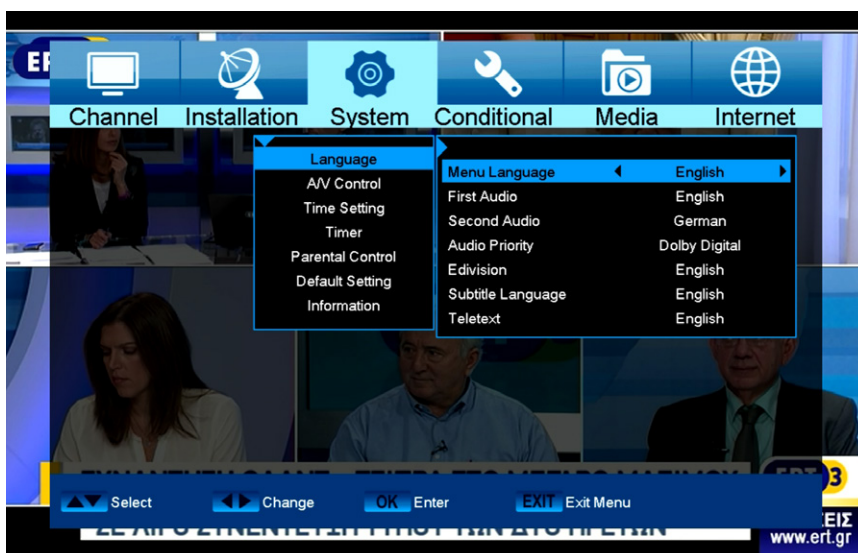


### Netw ID Scan

For ready-made channels from cable providers. Then press the red button.

## ► Menu system settings

- Languages
- A/V Control
- Time setting
- Timer
- Parental Control
- Factory setting
- Information



### Languages

#### Functions and settings in the menu:

**Menu language:** Select the language in which the Menu is displayed.

**First audio:** Set the audio language here for the first channel.

**Second audio:** Set the audio language here for the second channel.

**Audio priority:** Specify here which preferred audio mode (if available) should be used.

**EDIVISION:** Specify the language here in which the electronic program guide EDIVISION (EDV) should be displayed. (The program provider must support the language).

**Subtitle language:** Specify the language here in which the subtitle information will be displayed. (Language must be supported by the service provider).

**Teletext:** Specify the language here in which the teletext/video text information will be displayed. (Language must be supported by the service provider).

Exit the 'Language' menu by pressing the **EXIT button**.

#### **Minors' protection**

This menu is only accessible by entering a PIN code. The default setting of the PIN code is: 0000.

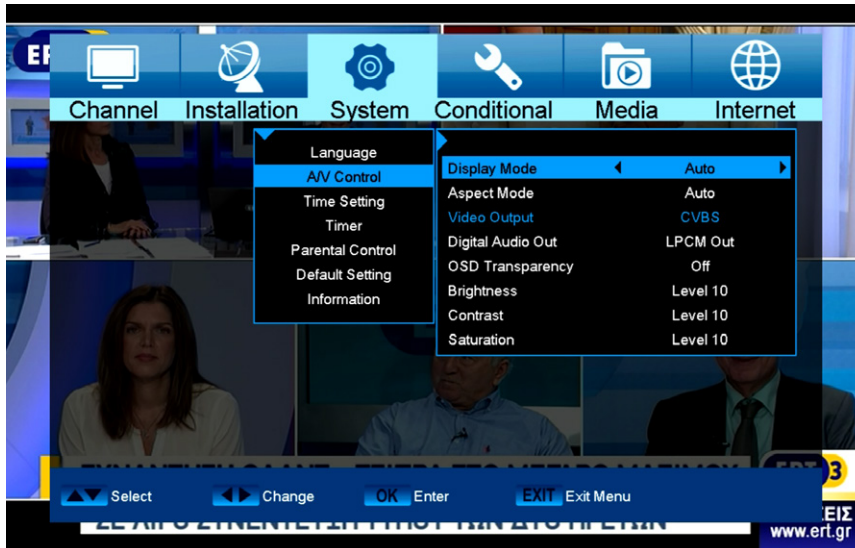
#### Functions and settings in the menu:

**Menu lock:** Set here whether to allow or deny access to the menu. If the 'On' value is selected

in this item, accessing the menu is only possible via PIN code. Channel bar, EDIVISION and favourite lists are exempt.

**Channel lock:** Specify here whether or not channels can be locked in general.  
**New password:** Specify a new password here.  
**Confirm password:** Repeat the new password.

Exit the 'Youth Protection' menu by pressing the EXIT button.



### AV Control

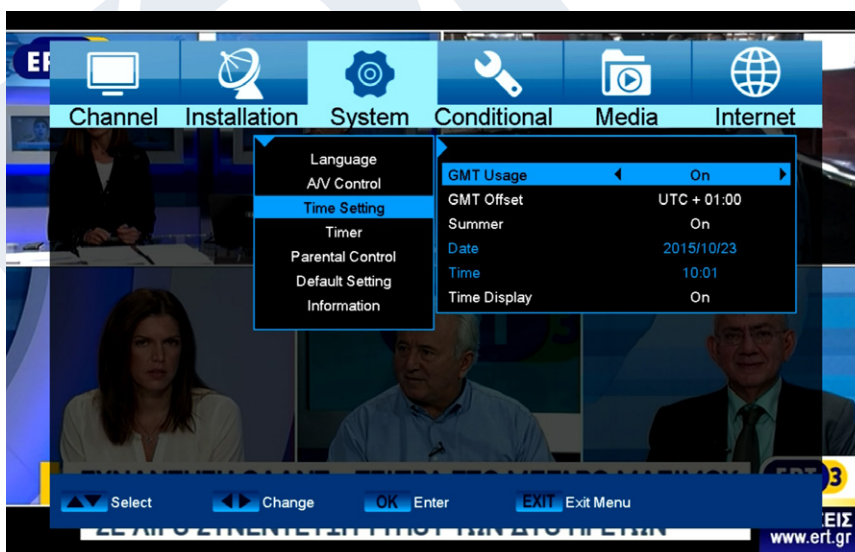
**Functions and settings in the menu:**

**Display Mode:** Select here between the options Auto, By Native TV, 720p\_50, 720p\_60, 1080i\_50 or 1080i\_60.

**Aspect Mode:** Determine here the aspect ratio with which the image will be displayed. (16:9, 4:3PS, 4:3LB, AUTO)

**Video Output:** Select the colour mode for image reproduction.

**Digital Audio Out:** Specify here the mode in which the digital audio output should work.



### Time setting

**Functions and settings in the menu:**

**GMT user:** Select 'On' here and the receiver automatically obtains the current time and date (via satellite signal). When the 'Off' option is selected here, date and time can be self-determined in the following items.

**Adjust GMT:** This item can only be reached when the 'On' option was set for the 'GMT user' item. It will be possible to specify here the difference between your local time and GMT (Greenwich

Mean Time). For Germany/Austria/Switzerland/ Luxembourg applies: UTC+01:00. For Athens/Bucharest/Istanbul applies: UTC+02:00. Scroll with the left/right arrow buttons to the value you want to set.

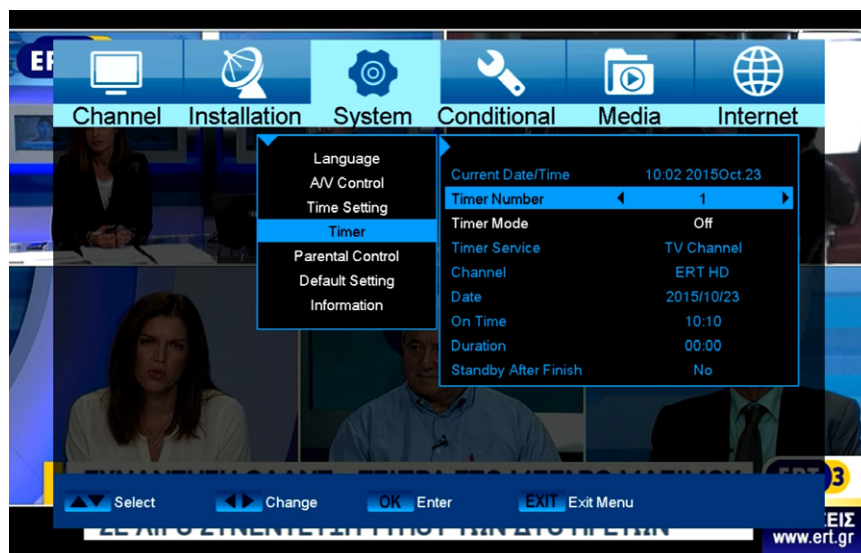
**Summer:** Specify here whether daylight saving time should be considered.

**Date:** This item can only be reached when the 'Off' option was set for the 'GMT User' item. Enter the date via the number buttons.

**Time:** This item can only be reached when the 'Off' option was set for the 'GMT User' item. Enter the time via the number buttons.

**Time display:** Specify whether (On) or not (Off) the time should be displayed in the front display of the receiver.

Exit the 'Time Settings' menu by pressing the **EXIT button**.



## Timer

Up to 8 time-based events can be programmed in this menu. In addition to programming recordings of Radio or TV channels, it is also possible to display events, such as a nice birthday or anniversary greeting at a certain time or specify to which channel to be woken up. Information on recordings can also be found in section EDIVISION.

## Functions and settings in the menu:

**Timer number:** Calling up the timer menu automatically switches to the next (available) programmable timer.

Use the left/right arrow buttons or OK button and the up/down arrow buttons to switch between (programmed) timers.

### Timer mode:

Set the recording mode here. Choose whether the recording is carried out once, daily, weekly or monthly.

### Timer service:

Specify a service here. Select the item 'Recording TV Channel' or 'Recording Radio Channel' for recordings. If wanting to be woken with a specific channel, select the 'TC Channel' or 'Radio Channel' here. Select the 'Message' input if wanting to display a message on the screen at a certain time. Wake-up message: This item only appears when coming across the 'Message' setting in the previous item. This allows to choose between 'Birthday', Anniversary' or 'General'.

### Station:

This item does NOT appear when coming across the 'Message' setting in the 'Timer Service' item. Otherwise, set the channel here to be recorded or to which to be woken up.

### Date:

Set the (start) date of the recording here.

### Start time:

Set the start time here.

### Duration:

This item is only changeable if the 'Recording TV Channel' value or 'Recording Radio Channel' value was set at the 'Timer Service' item. Then set the duration of the recording here (recording length).

### Standby at the end:

This item is only changeable if the 'Recording TV Channel' value or 'Recording Radio Channel' value was set at the 'Timer Service' item. It is then possible to determine whether the receiver should switch into standby mode after recording.

Exit the timer menu with the **EXIT button**. After making changes and wanting to keep them, confirm with 'Yes' in the appearing dialogue window.

**Note:** An error message appears under certain circumstances. As a rule, an incorrect start time or start date was given. Check the information!

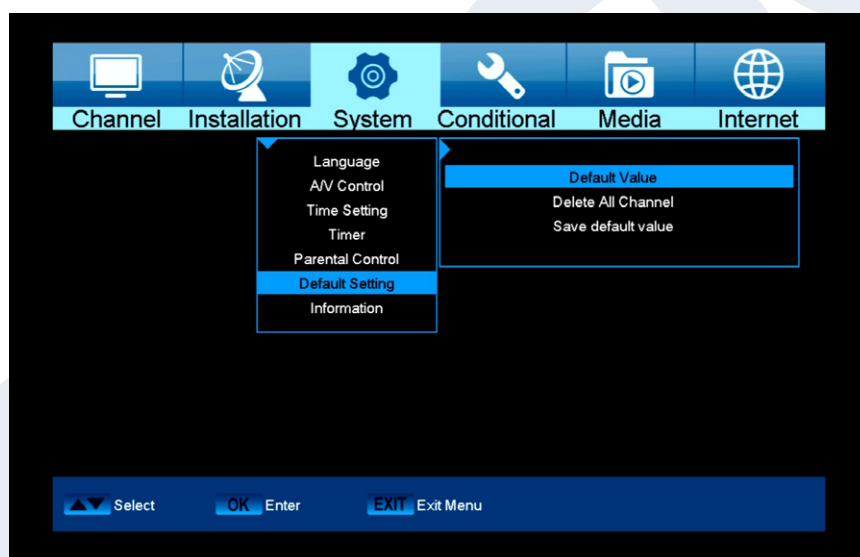
**Note:** A recording is only possible if a compatible USB memory device is connected to the receiver.

**Note:** A list of all programmed Timers can be found as follows: Press the EDIVISION button in the TV mode and then the yellow button, and then select 'Timer List' in the appearing menu window.

## Parental Control

You can set a password for "Installation" menu configuration. You can also set a password for channel locking. (For lock channel settings, please refer to LOCK section) Here in 'Parental Control' you can find out how to set and/or change the password.

- 1 In "Parental Lock" function, press [OK] key, there will pop a dialogue for you to input the password. When you input the correct password, you will see a screen like below:
- 2 Menu Lock determines whether or not a user has to enter a password for the "Installation" menu. If the setting of "Menu Lock" is "On", it means that the user has to key-in the password, if set to "Off" it means unlocked.
- 3 Channel Lock determines whether or not a user has to enter a password in order to play the locked channels. If the setting is "On", play the channels with lock mark will show up a dialogue on the screen and ask for the password. If the setting of "Channel Lock" is "Off", the Lock function is invalid.
- 4 New Password is used for revising password; you can input the new password in this item by using number keys directly. After you filled in 4 digital numbers, the highlight will auto skip to Confirm Password and ask you to input the new password again. If the password is correct, the screen will show up a message of "Saving Data, Please Wait..." After finish saving and drawback to "System Setup" menu, the revising is complete.
- 5 Press [Menu] key to draw back from the "Parental Lock" menu.



### Factory setting

Use the up/down arrow buttons to select one of the following menu items and press the **OK** button.

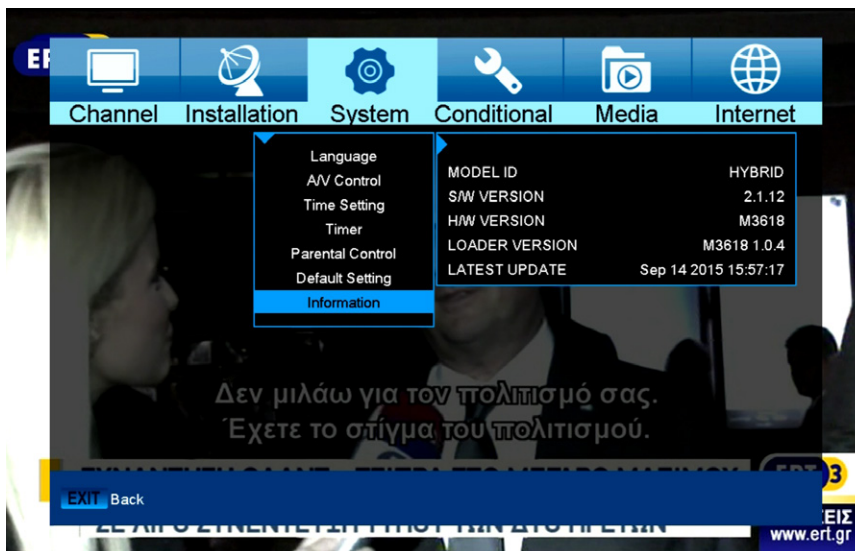
#### Functions and settings in the menu:

- Factory setting:** Use of this function deletes ALL user programmed values and reinstalls factory settings. After selecting with the OK button, enter the PIN code (as a rule 0000). A warning window appears afterwards.
- Delete all channels:** The channel lists are deleted here.
- Save as factory setting:** The current configuration can be specified here as factory setting.

Exit the 'Factory Setting' menu by pressing the **EXIT** button.

**Note:** The 'USB' menu is only accessible if a suitable USB memory device is plugged in and recognised by the receiver.





### Information

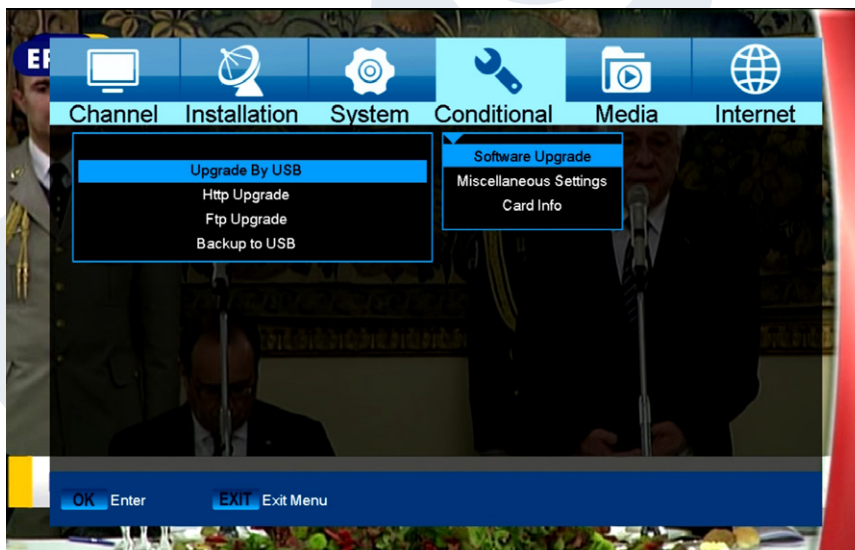
Information about the device is displayed here. This information may be relevant when contacting your dealer. Furthermore, the version of the receiver software can be found here.

Exit the 'Information' menu by pressing the **EXIT** button.

## ► System

- Software Update
- Miscellaneous Settings
- Card information

### Software Update



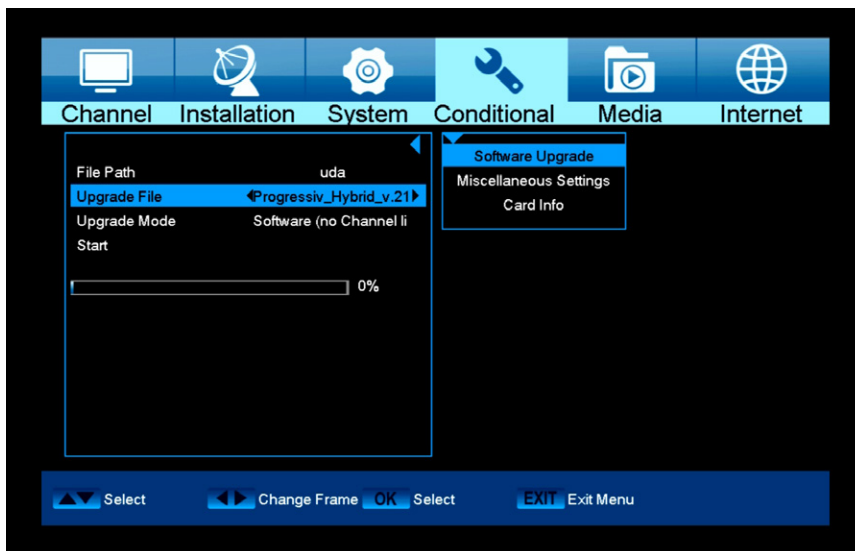
### Http Upgrade

#### Auto Upgrade

When selecting this menu item, the receiver tries to connect with the factory-set server by EDISION. A correct cable configuration and providing the proper values in 'Network Settings' menu item according to your network, the receiver connects and retrieves the file list from the server. File name, date, time and file size are displayed. Select the software file on the '.abs' file type and press the red button. It is possible to select the part of the

software to be updated in the appearing dialogue window. After selection, the upgrade process starts and moves to the following stages:

- Connect...
- Download...
- Delete...
- Write...
- Restart...



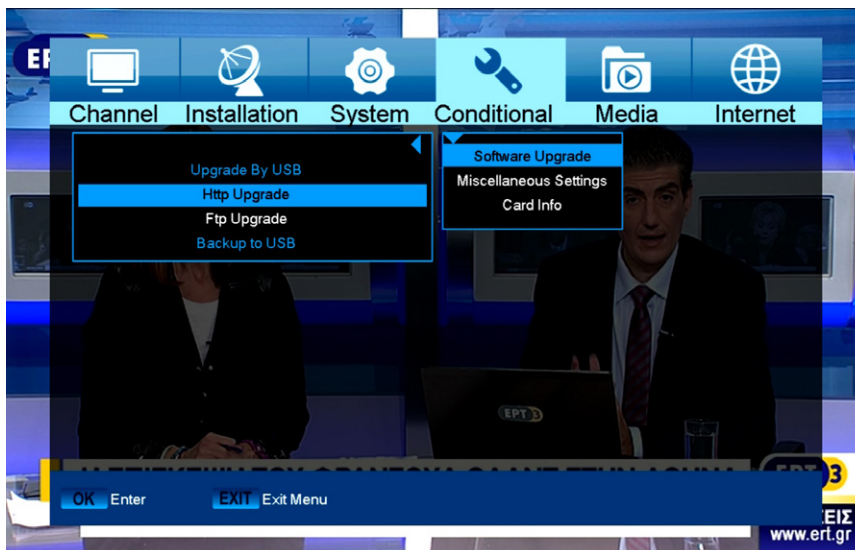
If the upgrade process is not started, it is possible to exit the 'Auto Upgrade' menu by pressing the **EXIT** button.

### Update from USB/HDD

**Standard:** This menu is only accessible if a suitable USB data storage is connected and recognised by the receiver. Otherwise, this menu is not accessible.

Another prerequisite for a 'USB/HDD Update' is that the appropriate software file is located on the USB data storage. This file with the '.abs' file extension can be downloaded from the Edision website via a PC with Internet connection. <http://www.edision.gr> "Progressiv HD C nano plus"

Save the downloaded file from your PC onto the USB data storage and plug this USB data storage device into the USB port of "Progressiv HD C nano plus".



**Note:** In these circumstances, the upload speed via USB depends on the data in the USB memory. It is recommended to prepare the USB memory device first via the «HDD formatting» (ALL data will be deleted) item in the 'USB'/'Memory Information' menu (to format, start with the yellow button) and then save the software file (.abs) inside.

### Functions and settings in the menu:

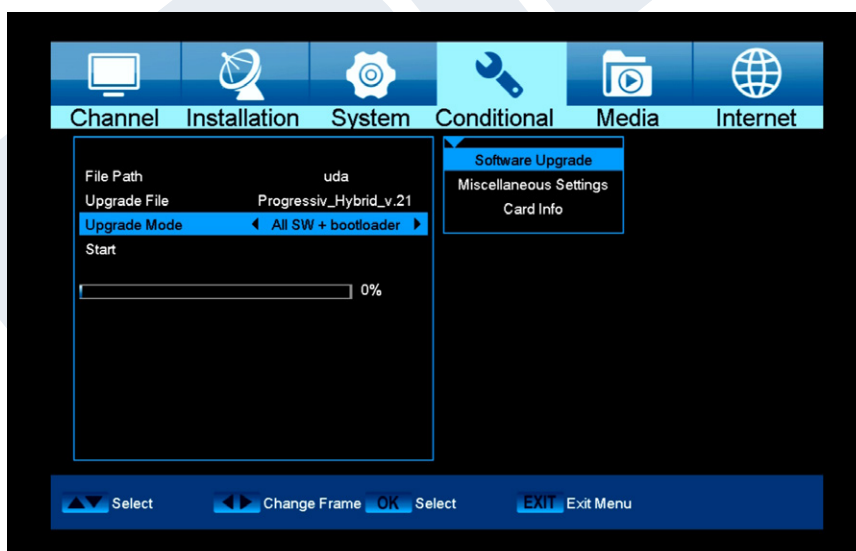
**Open file:** If the receiver has found files to be updated on the USB memory device, they will be displayed. Specify the file to be updated with the **arrow buttons** or **OK** button. If no files were found, it will be indicated with 'No File'.

**Update Mode:** Use the **arrow buttons** or **OK** button to

set the parts of the software to be updated.

**Start:** If the software file and Update Mode are specified, navigate with the **up/down** arrow buttons to the 'Start' item. Press the **OK** button and the Update process starts.

**Attention:** The software update starts immediately after pressing the OK button and must not be interrupted.



## Backup to USB/HDD

### Functions and settings in the menu:

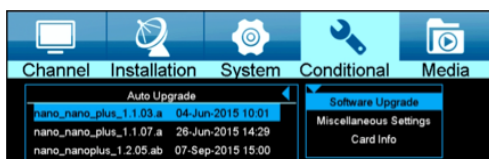
**Backup of the file:** Determine the file name for the backup file here. Press the OK button to display a letter and number field and specify with the arrow buttons and OK button the name for the backup file. Delete the last character by navigating in the letter field with the arrow buttons to the area '<-' and press the OK button. Confirm the input by navigating to the OK area and pressing the 'OK' button on the remote control. Use the 'EXIT' button to exit the input window.

**Backup to USB/HDD:** Navigate with the up/down arrow buttons to this menu item and press the OK button to start the backup.

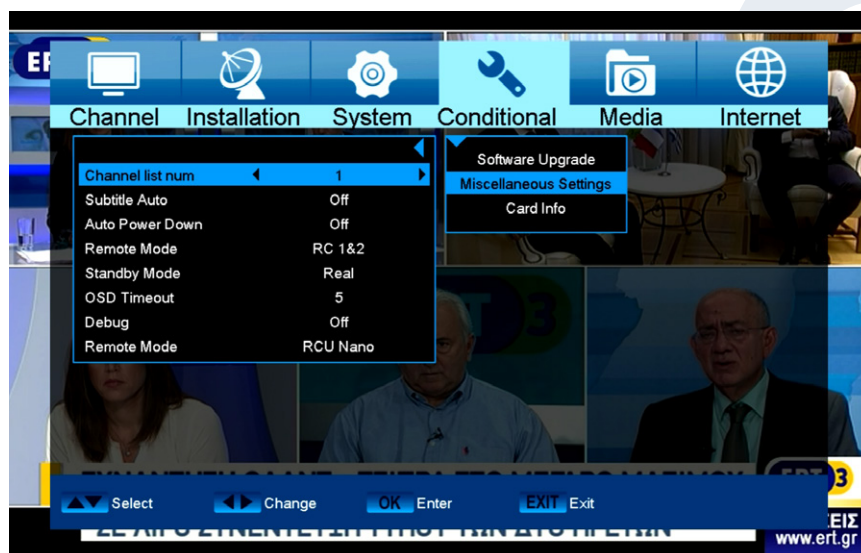
## Http Update

In a few steps to the current version. Please select the option Http Update and then Auto Update. It is possible on the next page to select the desired option to be transferred to the box. Please pay attention to the date in the image name.

### NEW Version



Use the red button to start the process. Please select how to transfer the file. Use the OK button to start the flash process. The flash process starts automatically after the download.



### Miscellaneous Settings

When you enter to "Miscellaneous Settings" menu, you see a screen with the following options:

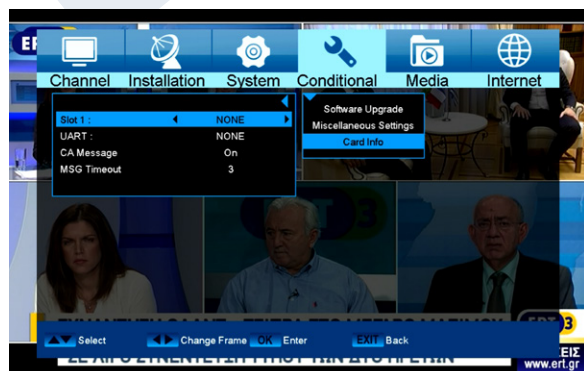
**1 Subtitle Auto:** You can press [Left/Right] key to select "On" or "Off". If the current channel has subtitle information, it will be showed up automatically while this function is "ON", if this function is "OFF", you need turn on the subtitle manually by press [Yellow] key.

**2 Auto Power Down:** You can press [Left/Right] key to select the time or "Off", if you select

time, duration this time if no any operation on receiver, it will go to standby mode.

**3 Standby mode:** if set to "Real", Press power key receiver will be in real standby status, the consumption will be less than 0.5 Watt. If it's set to "Fake", Press power key, receiver will be in fake standby status.

**4 OSD Timeout:** When you switch channels in full screen, there will show up some information about current channel on the lower of the screen. And regarding to the duration of these information show up on the screen, you can press [OK] and [up/ down] key to set the time. The range of the duration is "1 second ~ 10 seconds".



**5 OSD Position:** control display position of the info bar in full screen mode. You can choose "bottom" or "top".

### Card information

**Standard information:** At your disposal is one reader Smart Card (reader). If you place the card here suppliers of various subscription programs, you can watch many programs that are encoded with this system. In this menu you will find information on the Smart Card, which you placed on the port.



## Functions and settings in the menu:

**Port:** Show information about an existing card into port.

**Information Smart Card:** Here you can set if you want to display information about the inserted card or not.

Exit the menu «Smart Card» or «Info Smart Card» by pressing the **EXIT button**.

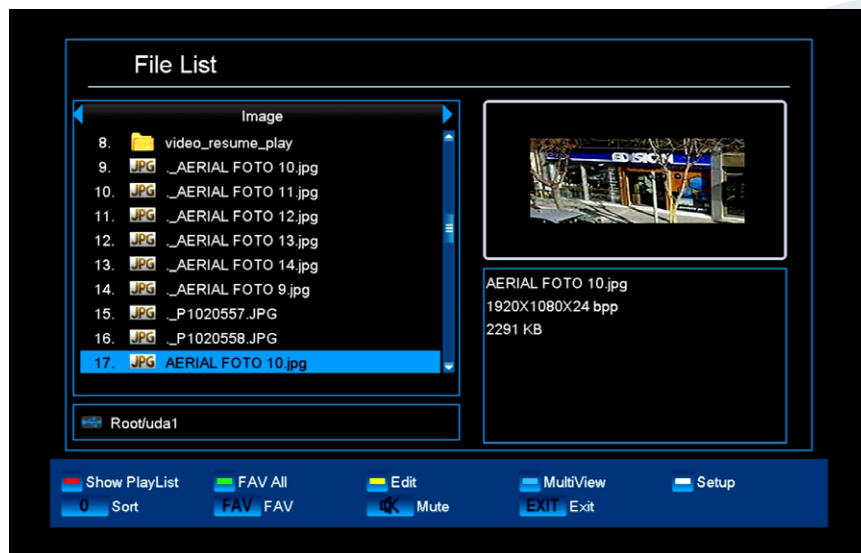
## ► Media

### ► File List

### ► Memory Information

### ► Check-Speed USB

### ► USB Safely Remove



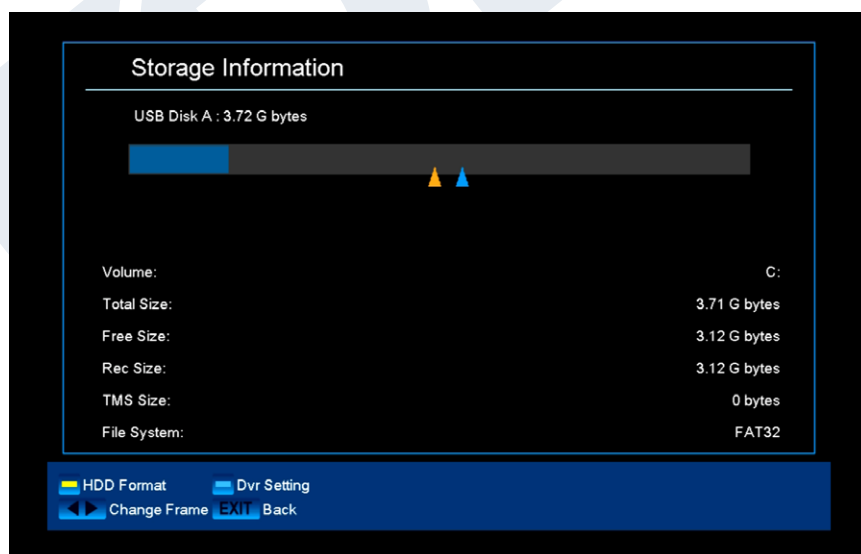
### File List

The arrow buttons enable the selection between «Image», «Video», «Software», «All» or «Music» mode.

Your images can be viewed from the USB medium in the image mode.

Your videos can be played from the USB medium in the video mode.

Your music can be played from the USB medium in the music mode.



### Memory Information

Information can be found in this menu about the connected USB memory device.

**Volume:** Displays the name.

**Total memory:** Displays the total memory capacity.

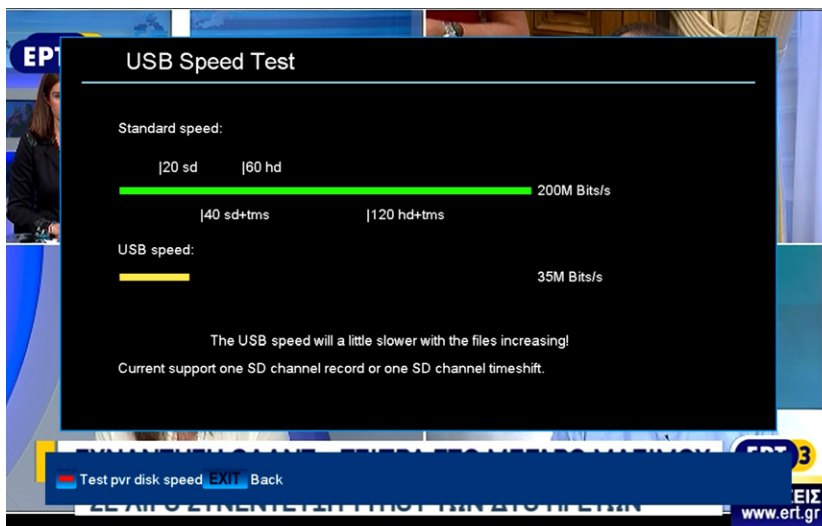
**Available memory:** Displays the available memory capacity.

**File system:** Displays the file system used.

It is possible to format the USB memory by pressing the **yellow button** (HDD formatting).

Specify in the 'HDD Formatting' menu the file system with which

the USB memory should be formatted (FAT or NTFS). Please note that this will delete all existing files on this USB memory.



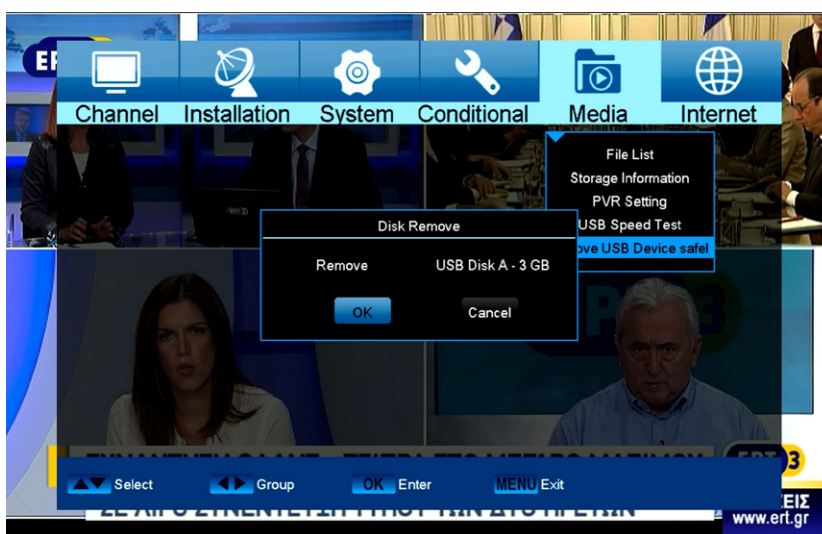
### Check-Speed USB

In this menu item you can control the speed of the connected USB memory device. The window displays the estimated transfer / write speed and if this speed is suitable for storing high definition channel content. Furthermore you see how many channels can be recorded simultaneously.

Exit menu «USB / HDD Speed Test» by pressing the **EXIT** button.

### USB Safely Remove

Safely remove the USB device



## ► Internet

### ► Ethernet Settings

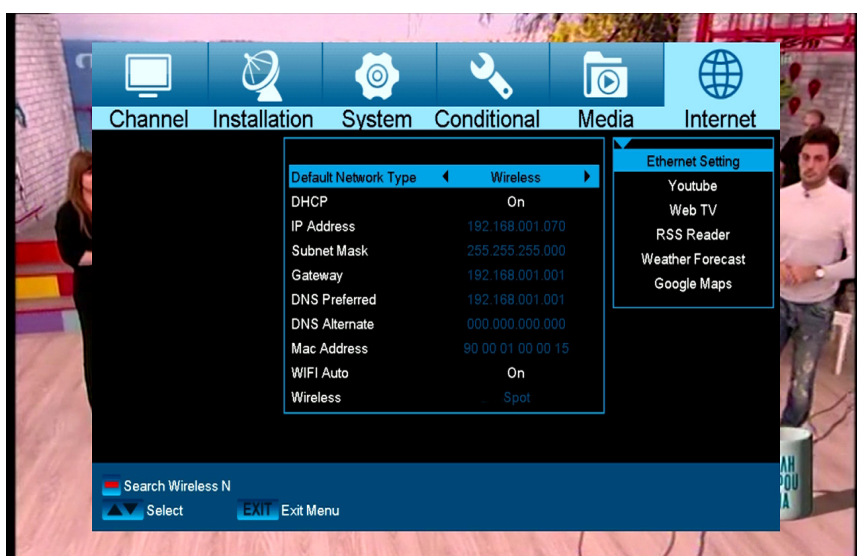
### ► YouTube

### ► Web TV

### ► Rss Reader

### ► Weather Forecast

### ► Google Maps



### Ethernet Settings

**Note:** The IP Address, Subnet Mask, Gateway, DNS Preferred and DNS Alternate items are only accessible if the 'Off' value is set at the 'DHCP' item.

### Functions and settings in the menu:

**DHCP:** When running a DHCP server on your network, it is possible to assign an IP address automatically to the receiver. For this purpose, set the 'On' value here. If DHCP is not used in your network, enter the appropriate values manually

for the following items.

**IP Address:** Enter an unassigned IP address from your network here.

**Subnet Mask:** Enter the subnetmask corresponding to the network here.

**Gateway:** Enter the IP address of the Gateway to the Internet here.

**DNS Preferred:** The IP address for a so-called name server (DNS Server) can be indicated here.

**DNS Alternate:** The IP address for an alternative name server (DNS Server) can be indicated here.

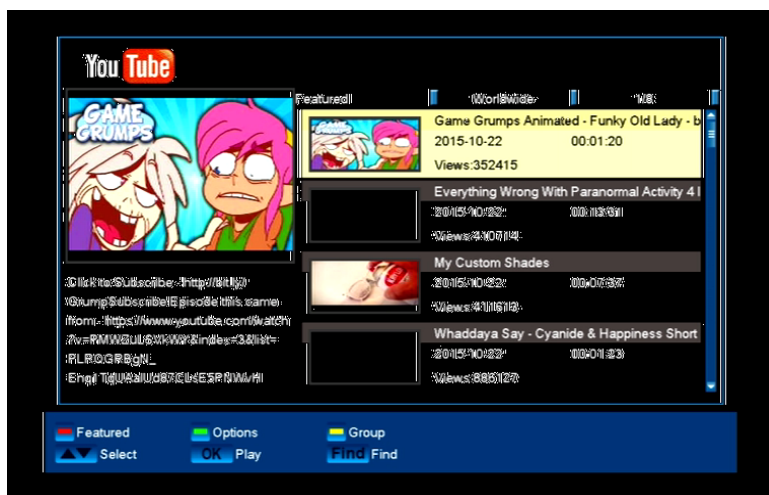
**Mac Address:** This item is defined hardware-sided and shows the identifier of the network interface.  
This item is not changeable.

**WIFI Auto Start:** Automatic connection with the WLAN after switching on.

**Wireless:** WLAN name (SID)

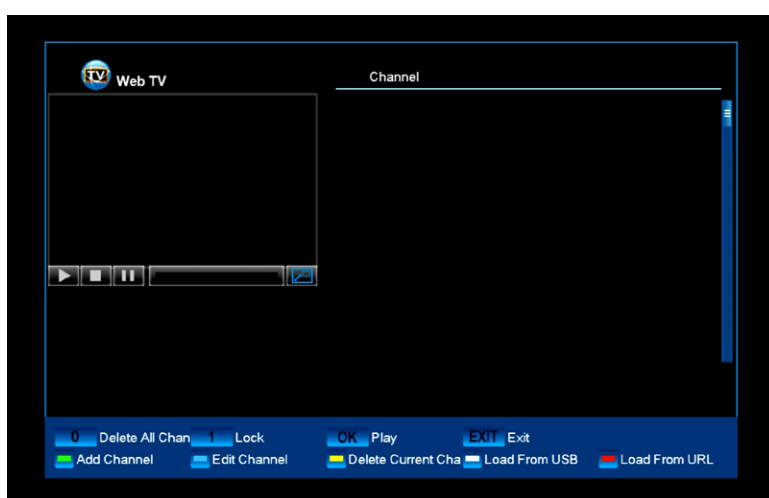
**Note:** Use the numeric buttons on the remote control to input numbers.

Exit the 'Network Local Settings' menu by pressing the EXIT button.



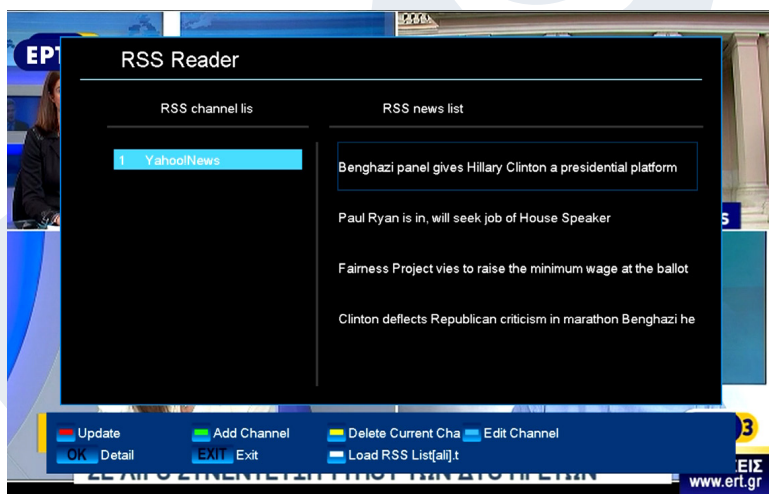
## YouTube

Access your favorite YouTube videos



## Web TV

Features Web TV



## Rss Reader

This menu item offers access to brief information from the Internet. The list of the information providers (RSS channel list) can be found in the left column and in the right column (RSS news list), news reports and information provided, if available via Internet.

Use the **up/down arrow buttons** to switch line-by-line in the lists and the **left/right arrow buttons** to switch the column. Use the **OK button** to display more information about the messages in the right column.

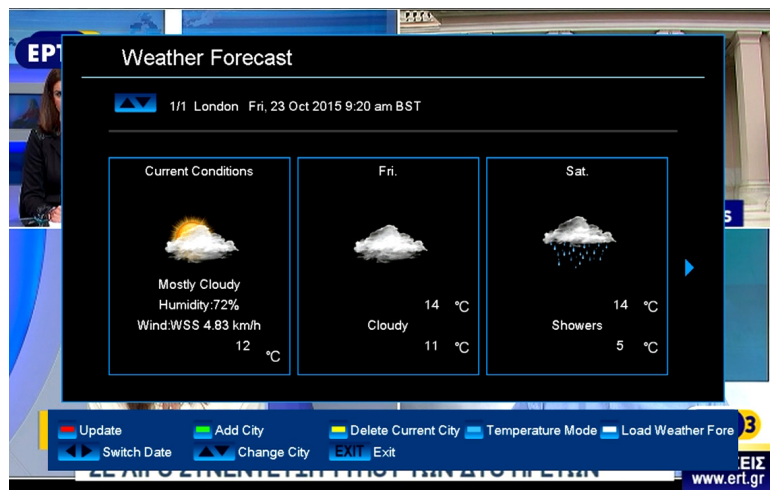
The selected list is updated by pressing the **red button**, the **green button** adds a new channel, the yellow button removes a channel from the list and the blue button edits a channel entry.

### How to add an information channel:

1. Make sure that your receiver is connected to the Internet.
2. Press the **green button** on the Internet/RSS Reader menu.
3. Indicate a name for the channel. Use the numbers or letter keys of the remote control.
4. Enter this address (URL) of the channel.
5. Press the **red button** to confirm the information.

**Notes:** Use the numeric key 1 to input the following special characters: . , \* ? ! @ . Enter the characters \_ - / : via the ZOOM or 0 button. Use the **yellow button** to delete a character, the **green button** to switch between lower and upper case spelling. RSS information channels can be found on the Internet.

Exit the 'RSS Reader' menu by pressing the **EXIT button**.



## Weather Forecast

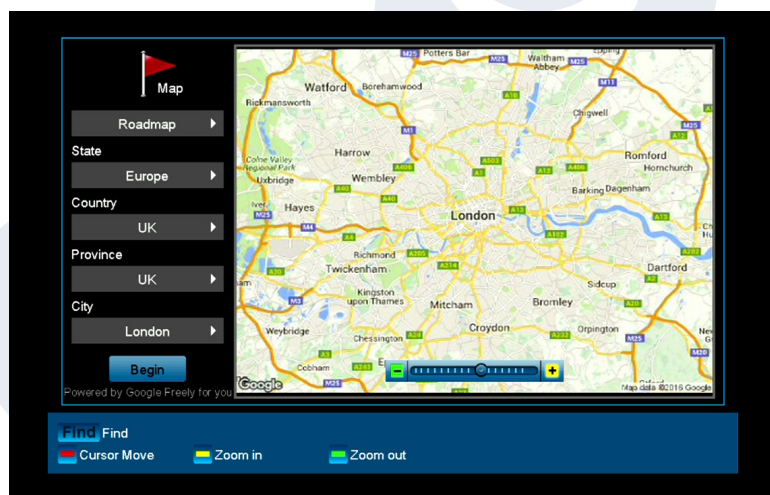
It is possible with an Internet connection to have this menu item display current weather data for the coming days about a specific location. Press the **green button** and use the **arrow buttons** to select and navigate in the letter field and the **OK button** to specify a new location. To confirm, navigate to the OK field and press the OK button on the remote control.

If several locations are specified, use the **up/down** arrow buttons to switch between the weather data of the various

locations.

Use the **left/right arrow buttons** to browse a few days forward or back again.

Exit the 'Weather Forecast' menu by pressing the **EXIT button**.



## Google Maps

Google Maps offers powerful, user-friendly mapping technology and local business information, such as their exact location, contact information and guidance to your destination.

**EDISION®**  
[www.edision.gr](http://www.edision.gr)

