

Televes®



Ref. 232103
Art. Nr. OSSGN

Software manual

EN **Electric Arc Splicer**

1. Programme “Option Fibre Splicig”

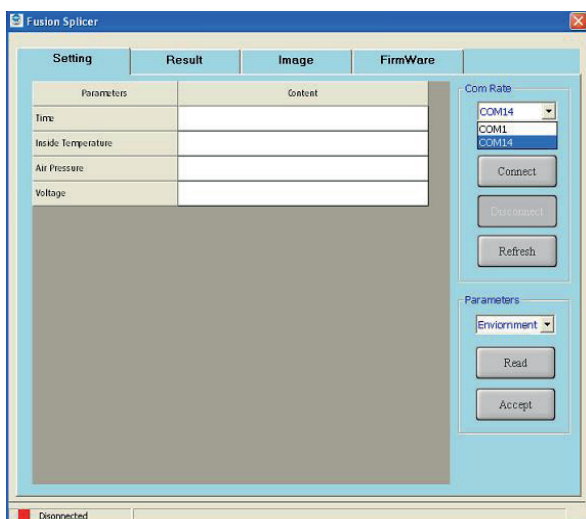
This programme will allow you to interact with the fusion splicer **code. 232103**.

Once the equipment is connected to the PC you will be able to access the following tabs:

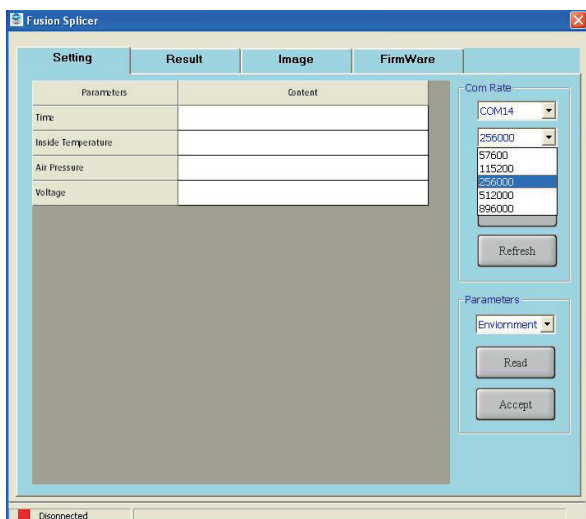
1. **Setting.** In this section you can check and edit some of the settings of the equipment.
2. **Result.** You can access a log with all the splices you have done.
3. **Image.** It allows you to download the images recorded with every splice.
4. **Firmware.** The equipment can be updated when a new version becomes available.

Follow these steps to run the programme:

1. Copy the files located on the cd to a folder of your PC (with the name 232103):
2. Now, in this folder, open the “ftdi_ft232_drive”, run and install the file“ftdi_ft232_drive.exe”.
3. Conect the fusion splicer to a USB port in your PC.
4. Turn on the fusion splicer.
5. Run the programme “OptionFiberFusing.exe” in 232103 folder.
6. Select the appropriate COM port with the option “Com Rate”.



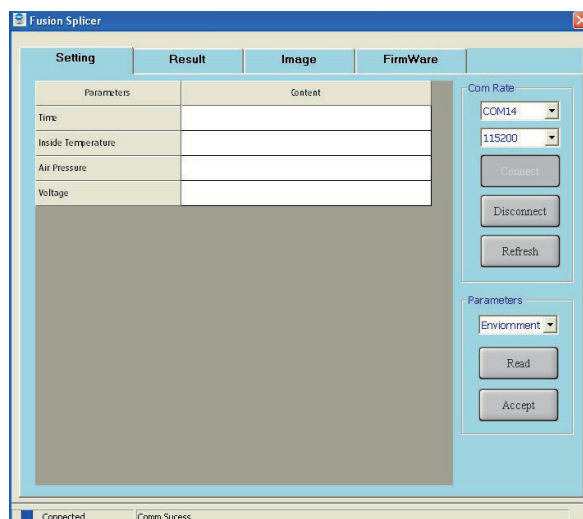
7. Select the appropriate Baudrate with the option “Com Rate” (You can check the value of it in “Settings” menu of the fusion splicer).



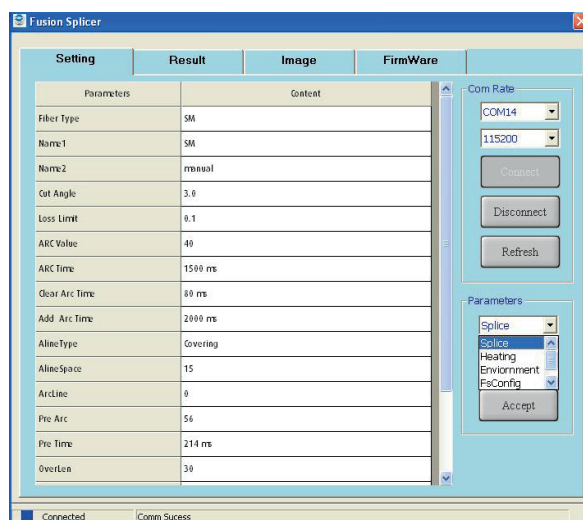
2. Setting

In this section you can check and edit some of the settings of the equipment.

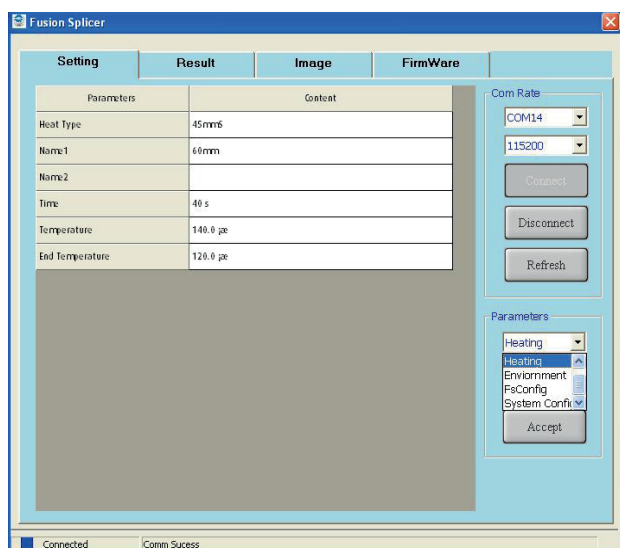
Press the button “Connect”. The red led (indicating disconnected) will turn blue (connected):



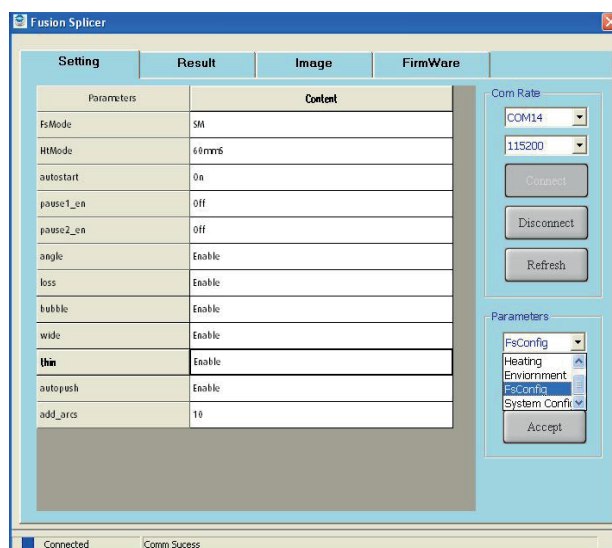
In the menu “Setting/Parameters/Splice” you can check the current configuration of the fusion splicer:



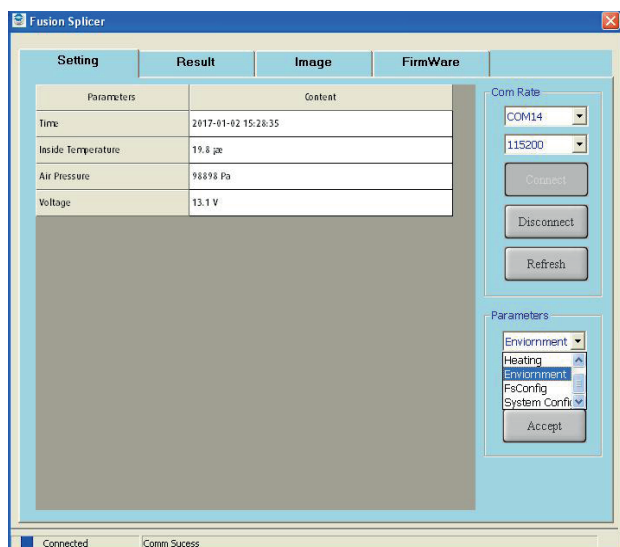
In the menu "Setting/Parameters/Heating" you can read and edit the parameters for the oven. Note that it is necessary to press the button "Accept" in order to implement any changes in the equipment:



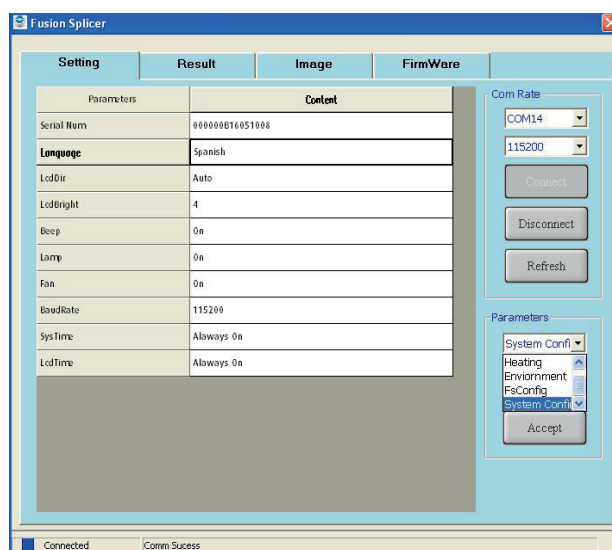
In the menu "Setting/Parameters/ FsConfig" you can check and edit the advanced settings for the fusion splicer. Note that it is necessary to press the button "Accept" in order to implement any changes in the equipment



In the menu "Setting/Parameters/ Enviornment " you can check all the sensors of the equipment:



In the menu "Setting/Parameters/ System Config" you can view and edit the user settings . Note that it is necessary to press the button "Accept" in order to implement any changes in the equipment

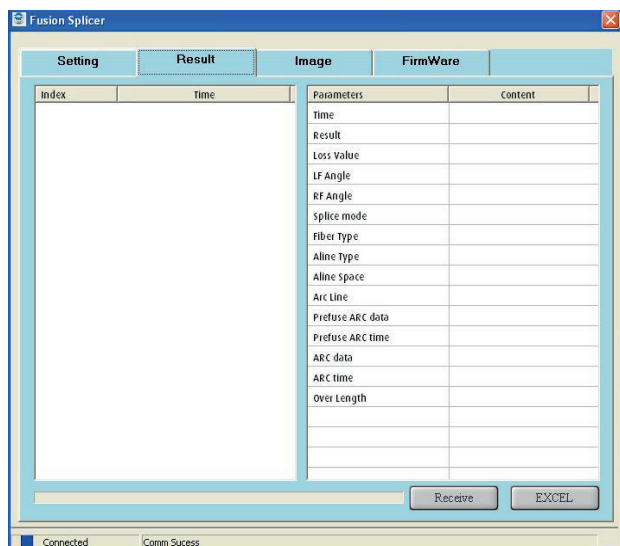


3. Result

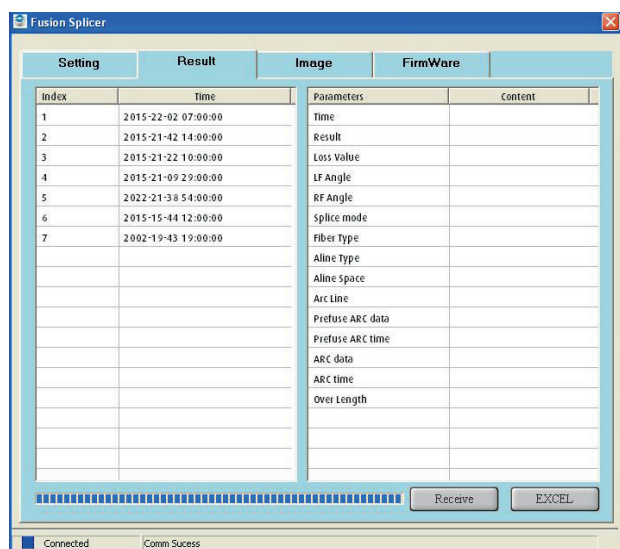
You can access a log with all the splices you have done.

In order to download the results of the splices you will need to follow the process below::

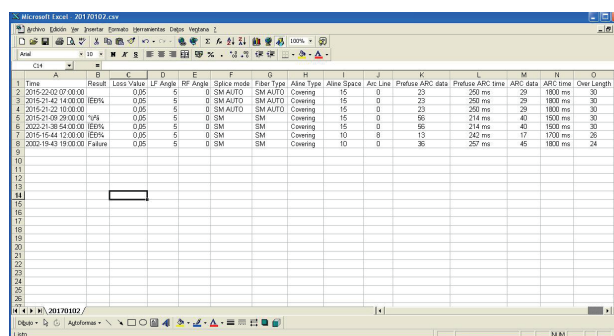
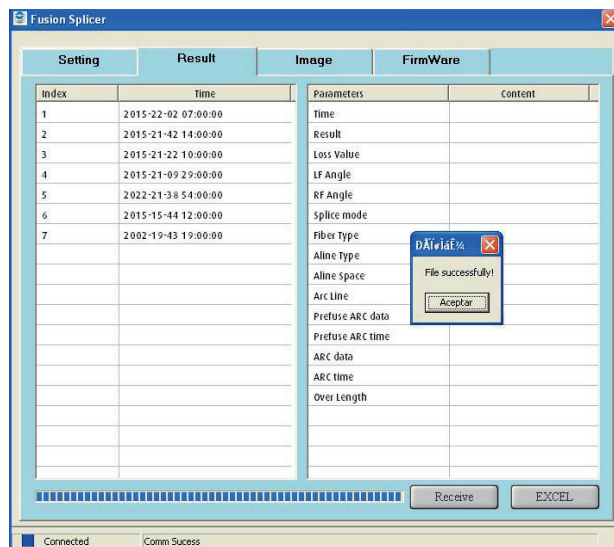
3.1 Press the button "Receive". A folder named "FS" will be created in the same location where the programme is installed.



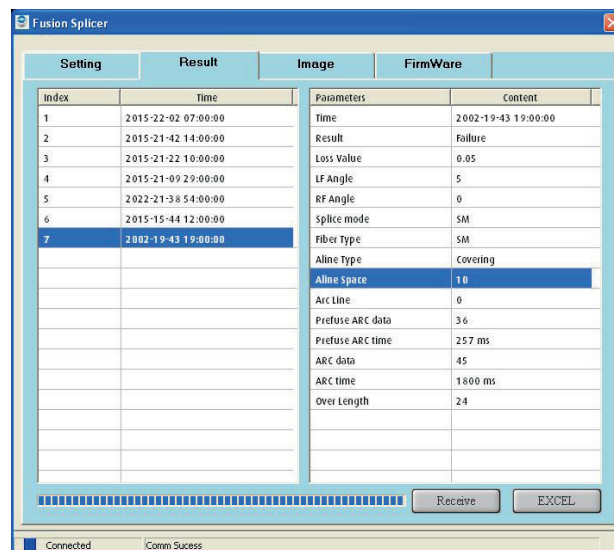
3.2 It will access all the splices saved in the equipment in the menu "Index".



3.3 By pressing the button "EXCEL", a spreadsheet "excel" format will be created in the folder "FS". All the data from the different splices done with the equipment will be included in the file.



3.4 By selecting a splice in the index menu you can access all the information related to that particular splice.

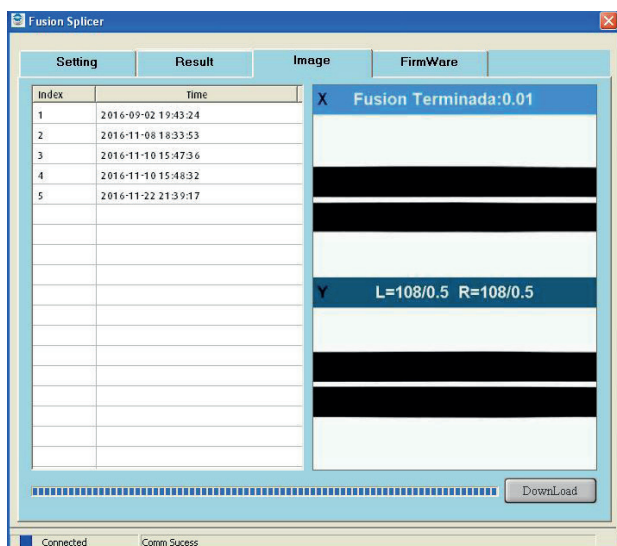


4. Image

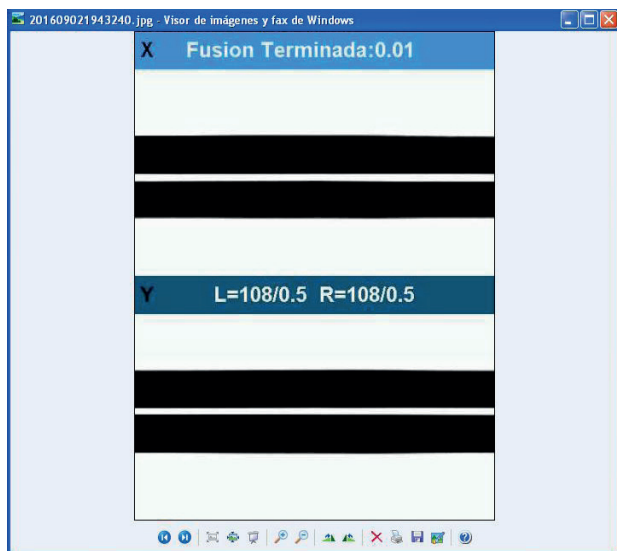
In this menu, you can download all the images of the fusion that you have previously saved. To do so, follow these steps:

4.1 Select one of the images in the "Index" menu.

The program will display the image. In addition a ".jpg" file will be saved in the folder "FS".



4.2 Once all the files have been downloaded, you will be able to select every image by accessing the folder "FS" and the sub-folder "JPG".



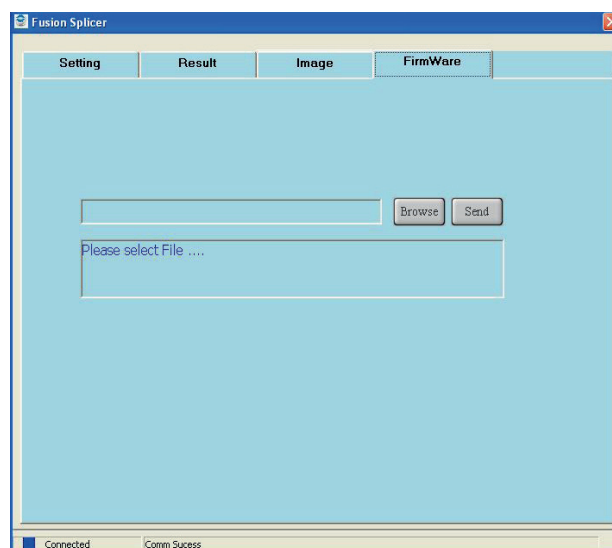
5. Firmware

The equipment can be updated when a new version becomes available. You need to access this option in the menu in order to carry out the update:

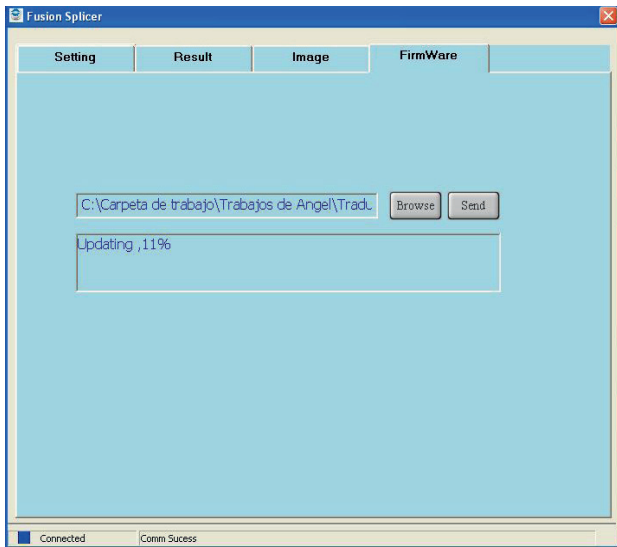
- 1 You must use only the updating files ".bin" supplied by Televes.
- 2 Any error occurred during the process will damage the performance of the equipment. The responsibility of this situation will fall on the person performing the update.

Process:

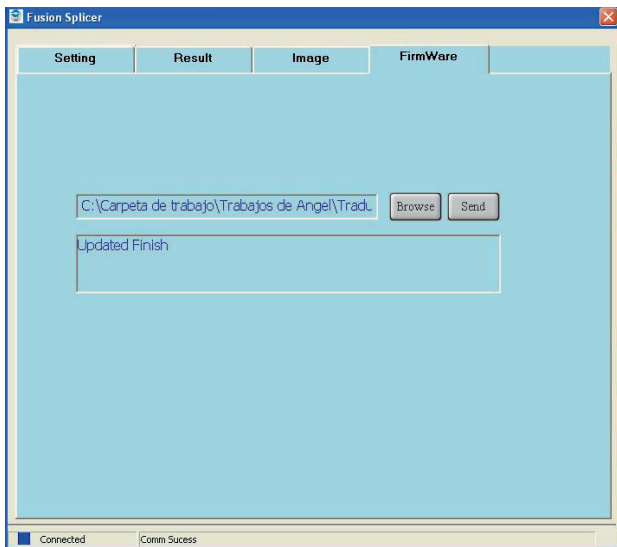
- 1 Run the programme "OptionFiberFusing.exe".
- 2 Connect the fusion splicer to the PC using a USB cable.
- 3 Configure the appropriate COM port and Baudrate, in the option "Com Rate".
- 4 Press the button "Connect" (The red led (indicating disconnected) will turn blue (connected)).
- 5 Select the tab "FirmWare".



- 6 Press the button "Browse" and select the updating file (xxx.bin). Press the button "Send".



Don't disconnect or change anything until the update bar is 100% completed and the message "Update finished" appears on the screen.



The splicer will beep repeatedly at this stage. Disconnect the battery and connect it back.

- 7 The equipment is now updated. However you will need to change all the parameters to the default configuration. To do so, access "Menu"--> "Settings"--> "Default settings"--> insert the password AAAAAAAA and accept by pressing the OK button.

You should access all the icons and confirm the change to the factory settings.

www.televes.com